

# **Capital Power**

## **AIR QUALITY MONITORING** **October 2017** **Monthly Report**

**Prepared by:**

**West Central Airshed Society**  
**Drayton Valley, Alberta**

November 15, 2017

Capital Power  
Mr. Kevin Parry  
Box 20, Site 2, RR 1  
Warburg, AB T0C 2T0

Dear Mr. Parry:

**Monthly Ambient Air Quality Monitoring Report for October 2017 for Capital Power**

Enclosed are the reports for the continuous ambient air quality monitoring station of the West Central Airshed Society network.

Network Station is                      AMS 910                      Genesee  
Identified as:

The person responsible for this reporting is Gary Redmond, Executive Director of West Central Airshed Society.

The following operational notes are included as required by the Air Monitoring Directive:

**1. Concentrations in excess of the Clean Air (Maximum Levels) Regulation:**

There were no readings in excess of guidelines as indicated in Air Monitoring Directive Section III.A.3. (a&b) for SO<sub>2</sub>, NO<sub>2</sub> or PM<sub>2.5</sub>.

**2. Operational times less than 90 percent:**

There were no operational times less than 90% for the month of October.

**3. Monitoring Notes:**

**AMS 910 (Genesee)**

All analyzers and meteorological sensors returned an uptime of 100% for the month of October.

If additional information is required, please call (587) 499-4900.

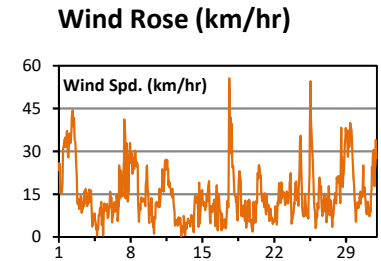
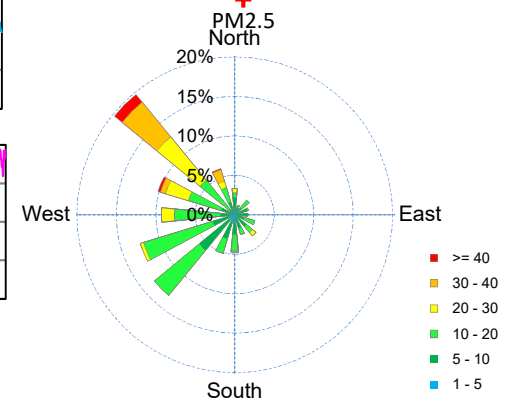
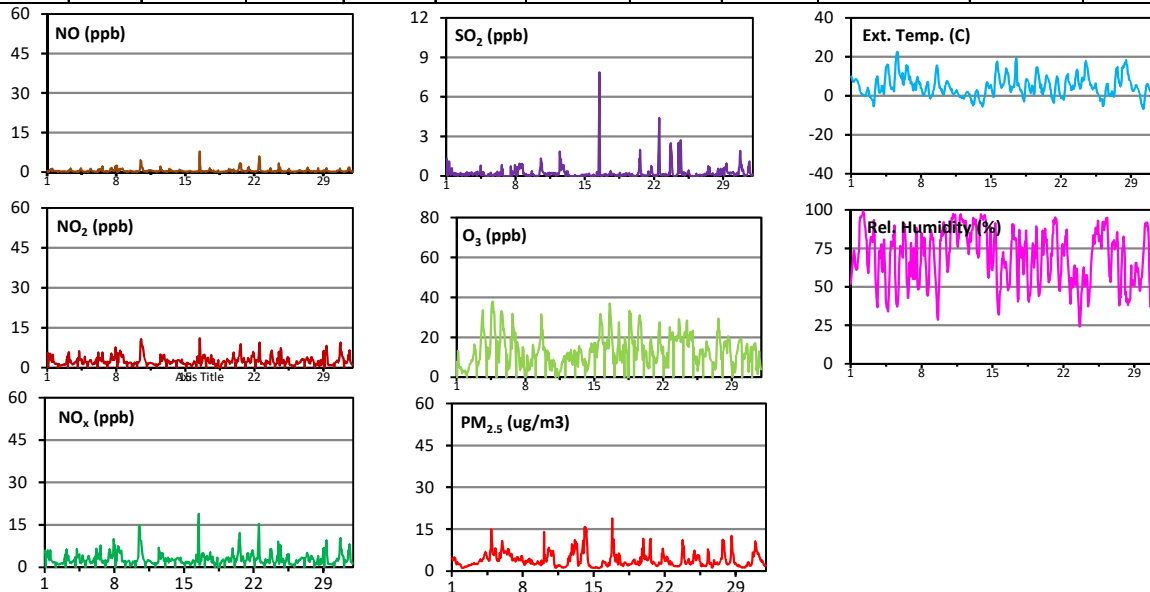
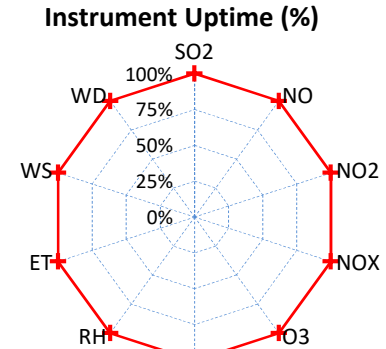
Sincerely,



Patrick Andersen  
Environmental Specialist

# WCAS - October 2017 Genesee Summary Report

Pollutants		Month Records		24-Hour Records				1-Hour Records			
Name	Conc Unit	Avg. Conc.	Uptime	Maximum		AAAQO Objective	Exceed No.	Maximum		AAAQO Objective	Exceed No.
				Conc	Time			Conc	Time		
SO <sub>2</sub>	ppb	0.2	100.0%	0.8	Oct-16	48	0	7.9	Oct-16 12:00	172	0
NO	ppb	0.5	100.0%	1.0	Oct-10	-	-	7.8	Oct-16 12:00	-	-
NO <sub>2</sub>	ppb	2.6	100.0%	4.7	Oct-10	-	-	11.1	Oct-16 12:00	159	0
NO <sub>x</sub>	ppb	3.1	100.0%	5.7	Oct-10	-	-	18.9	Oct-16 12:00	-	-
O <sub>3</sub>	ppb	14	100.0%	22	Oct-4	-	-	38	Oct-04 17:00	82	0
PM <sub>2.5</sub>	µg/m <sup>3</sup>	4	100.0%	7	Oct-6	30	0	19	Oct-16 20:00	80	0



## Monthly Summary

- \* All data has been slope, intercept, and baseline corrected. Data may change after validation process.
- \* The measured ambient concentrations of all parameters are within the AAAQO.
- \* All compliance parameters are above 90% operational.
- \* Routine calibration was performed on October 18.

**WEST CENTRAL AIRSHED SOCIETY**

**CONTINUOUS AMBIENT AIR QUALITY  
MONITORING PROGRAM  
MONTHLY REPORT  
CONTINUOUS AIR MONITORING DATA**

**AMS 910  
GENESEE  
OCTOBER 2017**

Operations and Data Collection by:  
West Central Airshed Society  
Drayton Valley, Alberta

QA/QC, Data Validation and Reporting by:  
West Central Airshed Society  
Drayton Valley, Alberta

**Summary Report**

*Continuous air quality/meteorological monitoring measurements*

**West Central Airshed Society**

EPCOR / Genesee Station 910													October 2017		
Parameter	Calibration Hours	Number of Data	Percent Uptime	Mean	Min	Max	Percentile					Exceedences		24 Hour Average Max (ppm)	
							P10	Q1	Median	Q3	P90	1-hour	24-hour		
SO <sub>2</sub> (ppb)	35	709	100.0	0.2	0.0	7.9	0.0	0.0	0.1	0.2	0.6	0	0	0.001	
O <sub>3</sub> (ppb)	35	709	100.0	13.6	0.2	37.9	4.6	8.0	12.8	17.9	23.9	0	-	0.022	
NO (ppb)	37	707	100.0	0.5	0.0	7.8	0.2	0.2	0.3	0.5	1.1	-	-	-	
NO <sub>2</sub> (ppb)	37	707	100.0	2.6	0.3	11.1	1.1	1.5	2.1	3.1	4.8	0	0	0.005	
NO <sub>x</sub> (ppb)	37	707	100.0	3.1	0.4	18.9	1.3	1.8	2.5	3.6	5.7	-	-	-	
Particulate Matter 2.5 microns (µ/m <sup>3</sup> )	0	744	100.0	4.0	1.0	18.9	1.6	2.2	3.1	5.0	7.2	0	0	6.52 ug/m3	
Wind Speed (kph)	0	744	100.0	15.0	0.2	55.6	5.3	8.5	12.5	19.0	29.2	-	-	-	
Temperature - 2m (°C)	0	744	100.0	4.9	-6.8	22.6	-1.0	1.2	4.2	7.8	12.5	-	-	-	
Temperature - 10m (°C)	0	744	100.0	5.2	-4.7	21.7	-1.0	1.2	4.8	8.1	12.7	-	-	-	
Delta Temperature (°C)	0	744	100.0	0.3	-3.0	4.3	-1.1	-0.6	0.0	1.2	2.2	-	-	-	
Relative Humidity (%)	0	744	100.0	69.4	24.0	99.1	44.3	55.8	71.6	83.7	92.3	-	-	-	
Global Solar Radiation (W/m <sup>2</sup> )	0	744	100.0	80.5	0.0	590.4	0.0	0.0	0.0	119.2	297.1	-	-	-	
Std Dev Wind Direction (deg)	0	744	100.0	15.7	2.7	90.9	7.0	9.0	12.0	17.4	28.9	-	-	-	
Std Dev Wind Speed (kph)	0	744	100.0	3.3	0.6	17.8	1.3	1.9	2.8	4.3	6.2	-	-	-	



**WCAS - Genesee**  
**Summary of Hourly Averages**

**Sulphur Dioxide (SO<sub>2</sub>) - ppb**  
**October 2017**

Maximum Value: 7.86 ppb on Oct 16 12:00		Maximum Daily Average: 0.75 ppb on Oct 16		Hours in Service: 744																							
Minimum Value: 0.0 ppb on Oct 2 15:00		Minimum Daily Average: 0.01 ppb on Oct 14		Hours of Data: 709																							
Maximum Diurnal Average: 0.67 ppb at hour 12		Minimum Diurnal Average: 0.10 ppb at hour 5		Hours of Missing Data: 35																							
Monthly Average: 0.245 ppb		Percentiles: P <sub>1</sub> = 0.0 P <sub>10</sub> = 0.0 Q <sub>1</sub> = 0.0 Median = 0.1 Q <sub>3</sub> = 0.2 P <sub>90</sub> = 0.6 P <sub>99</sub> = 2.5		Hours of Calibration: 35																							
				Percent Operational Time: 100.0																							
Day	Hourly Period Ending At																								Daily Average	Daily Maximum	
	1	2	3	4	5	6	7	8	9	10	11	12	13	14	15	16	17	18	19	20	21	22	23	24			
1-Oct	0.8	1.3	Z	0.5	0.5	0.8	1.1	1.0	0.5	0.1	0.2	0.1	0.5	0.6	0.2	0.2	0.2	0.2	0.1	0.2	0.0	0.1	0.2	0.2	0.41	1.32	
2-Oct	0.2	0.1	Z	0.1	0.1	0.0	0.1	0.1	0.1	0.1	0.2	0.1	0.1	0.1	0.0	0.1	0.1	0.1	0.1	0.1	0.1	0.0	0.2	0.2	0.11	0.22	
3-Oct	0.2	0.3	Z	0.2	0.2	0.2	0.1	0.2	0.0	0.2	0.2	0.2	0.2	0.3	0.1	0.0	0.1	0.1	0.1	0.2	0.2	0.1	0.3	0.3	0.18	0.28	
4-Oct	0.2	0.3	Z	0.3	0.3	0.2	0.1	0.2	0.2	0.1	0.3	0.8	0.0	0.1	0.1	0.3	0.1	0.1	0.3	0.1	0.1	0.0	0.0	0.0	0.18	0.79	
5-Oct	0.0	0.0	Z	0.0	0.0	0.1	0.0	0.0	0.0	0.2	0.1	0.1	0.2	0.1	0.0	0.0	0.0	0.0	0.0	0.0	0.1	0.1	0.1	0.2	0.06	0.25	
6-Oct	0.1	0.2	Z	0.3	0.1	0.1	0.0	0.0	0.0	0.2	0.3	0.0	0.1	0.1	0.8	0.2	0.5	0.0	0.0	0.0	0.0	0.0	0.0	0.0	0.13	0.84	
7-Oct	0.0	0.0	Z	0.0	0.0	0.0	0.0	0.0	0.0	0.0	0.0	0.0	0.7	0.3	0.1	0.0	0.3	0.3	0.2	0.2	0.1	0.4	0.8	0.6	0.18	0.84	
8-Oct	0.5	0.7	Z	0.1	0.1	0.2	0.7	0.5	0.7	0.9	0.6	0.6	0.6	0.7	0.9	0.8	0.9	0.8	0.1	0.2	0.1	0.2	0.1	0.0	0.48	0.93	
9-Oct	0.1	0.2	Z	0.1	0.1	0.0	0.0	0.1	0.0	0.0	0.0	0.1	0.0	0.1	0.1	0.4	0.1	0.1	0.1	0.1	0.0	0.1	0.0	0.0	0.08	0.36	
10-Oct	0.0	0.0	Z	0.0	0.0	0.0	0.0	0.0	0.0	0.1	0.3	0.5	0.7	1.3	1.2	1.0	0.4	0.3	0.3	0.2	0.1	0.2	0.2	0.2	0.31	1.33	
11-Oct	0.1	0.2	Z	0.0	0.1	0.0	0.2	0.1	0.2	0.1	0.2	0.0	0.2	0.1	0.2	0.2	0.2	0.2	0.2	0.2	0.1	0.1	0.2	0.2	0.14	0.24	
12-Oct	0.2	0.2	Z	0.1	0.1	0.1	0.2	0.2	0.1	0.3	0.3	1.9	1.0	1.3	1.2	0.4	0.6	0.8	0.7	0.6	0.8	0.6	0.3	0.2	0.53	1.85	
13-Oct	0.1	0.0	Z	0.3	0.0	0.0	0.3	0.1	0.0	0.1	0.0	0.0	0.0	0.0	0.0	0.0	0.0	0.0	0.0	0.0	0.0	0.0	0.1	0.1	0.05	0.34	
14-Oct	0.1	0.0	Z	0.0	0.0	0.0	0.0	0.0	0.0	0.0	0.0	0.0	0.0	0.0	0.0	0.0	0.0	0.1	0.0	0.0	0.0	0.1	0.0	0.0	0.01	0.10	
15-Oct	0.0	0.1	Z	0.1	0.0	0.0	0.0	0.0	0.1	0.1	0.2	0.1	0.0	0.0	0.0	0.0	0.0	0.0	0.1	0.0	0.0	0.1	0.0	0.1	0.05	0.17	
16-Oct	0.0	0.0	Z	0.0	0.0	0.3	0.2	0.0	0.0	0.0	5.0	7.9	3.3	0.0	0.0	0.0	0.0	0.0	0.1	0.1	0.0	0.0	0.1	0.1	0.75	7.86	
17-Oct	0.1	0.1	Z	0.1	0.0	0.1	0.1	0.0	0.0	0.1	0.2	0.2	0.1	0.2	0.4	0.1	0.0	0.1	0.0	0.1	0.2	0.1	0.1	0.1	0.11	0.38	
18-Oct	0.0	0.1	Z	0.0	0.0	0.0	0.1	0.0	0.1	C	C	C	C	0.3	0.0	0.0	0.0	0.0	0.1	0.0	0.0	0.1	0.1	0.1	0.05	0.25	
19-Oct	0.1	0.1	Z	0.2	0.2	0.2	0.1	0.2	0.1	0.1	0.1	0.2	0.0	0.1	0.0	0.0	0.1	0.0	0.1	0.0	0.0	0.0	0.0	0.0	0.09	0.23	
20-Oct	0.0	0.0	Z	0.0	0.0	0.0	0.0	0.0	0.1	0.2	0.2	0.5	1.3	1.0	2.0	0.5	0.3	0.0	0.0	0.0	0.0	0.1	0.0	0.0	0.28	1.97	
21-Oct	0.1	0.0	Z	0.0	0.0	0.0	0.0	0.0	0.1	0.0	0.3	0.1	0.1	0.1	0.2	0.3	0.4	0.8	0.7	0.3	0.1	0.1	0.0	0.1	0.16	0.76	
22-Oct	0.1	0.0	Z	0.0	0.1	0.0	0.0	0.0	0.1	0.1	1.5	2.1	4.4	2.3	0.2	0.2	0.0	0.1	0.0	0.1	0.0	0.0	0.1	0.1	0.51	4.41	
23-Oct	0.1	0.1	Z	0.1	0.1	0.0	0.1	0.0	0.0	0.1	0.0	0.1	0.1	0.3	0.2	2.2	2.5	2.1	1.8	1.0	0.3	0.1	0.1	0.0	0.49	2.48	
24-Oct	0.0	0.0	Z	0.0	0.0	0.0	0.0	0.0	0.1	0.2	0.3	2.5	1.3	0.2	2.2	2.0	2.7	1.9	0.7	0.3	0.1	0.2	0.1	0.3	0.66	2.71	
25-Oct	0.2	0.2	Z	0.2	0.1	0.1	0.1	0.2	0.2	0.3	0.1	0.3	0.4	0.1	0.0	0.0	0.1	0.0	0.0	0.0	0.0	0.0	0.0	0.0	0.11	0.41	
26-Oct	0.0	0.0	Z	0.0	0.0	0.0	0.2	0.0	0.0	0.0	0.0	0.0	0.0	0.1	0.1	0.1	0.1	0.0	0.0	0.0	0.1	0.0	0.1	0.0	0.03	0.18	
27-Oct	0.1	0.1	Z	0.2	0.1	0.1	0.1	0.1	0.1	0.3	0.3	0.7	0.1	0.2	0.7	0.2	0.2	0.1	0.1	0.1	0.1	0.1	0.1	0.2	0.19	0.74	
28-Oct	0.1	0.0	Z	0.0	0.1	0.1	0.1	0.1	0.0	0.1	0.3	0.6	0.1	0.0	0.1	0.1	0.1	0.5	0.2	0.0	0.1	0.2	0.3	0.4	0.16	0.55	
29-Oct	0.6	0.3	Z	0.6	0.7	0.5	0.5	0.9	0.5	0.3	0.2	0.2	0.2	0.2	0.2	0.1	0.2	0.3	0.2	0.2	0.2	0.3	0.3	0.2	0.34	0.95	
30-Oct	0.3	0.2	Z	0.1	0.1	0.1	0.1	0.0	0.1	0.2	0.2	0.2	0.2	0.1	0.6	0.8	1.5	1.9	0.9	0.7	0.9	0.4	0.4	0.5	0.46	1.91	
31-Oct	0.5	0.1	Z	0.1	0.0	0.1	0.0	0.0	0.0	0.1	0.1	0.2	0.7	0.4	0.9	1.1	0.5	0.2	0.1	0.1	0.0	0.0	0.0	0.1	0.24	1.09	
		0.16	0.15	--	0.13	0.10	0.11	0.15	0.14	0.11	0.15	0.40	0.67	0.56	0.34	0.41	0.37	0.40	0.36	0.24	0.17	0.13	0.12	0.14	0.14	Diurnal Average	
		0.77	1.32	--	0.59	0.69	0.82	1.10	1.00	0.68	0.93	4.97	7.86	4.41	2.32	2.24	2.22	2.71	2.05	1.85	0.97	0.86	0.55	0.84	0.59	Diurnal Maximum	
Z - zerospan																											
C - Calibration																											
Alberta Ambient Air Quality Objectives (AAAQO): 1-hr 172 ppb																											
24-hr 48 ppb																											



**WCAS - Genesee**  
**Summary of Hourly Averages**

**Ozone (O<sub>3</sub>) - ppb**  
**October 2017**

Maximum Value: 37.93 ppb on Oct 4 17:00		Maximum Daily Average: 22.32 ppb on Oct 4		Hours in Service: 744																									
Minimum Value: 0.2 ppb on Oct 11 09:00		Minimum Daily Average: 4.79 ppb on Oct 11		Hours of Data: 709																									
Maximum Diurnal Average: 18.63 ppb at hour 16		Minimum Diurnal Average: 9.62 ppb at hour 8		Hours of Missing Data: 35																									
Monthly Average: 13.596 ppb		Percentiles: P <sub>1</sub> = 1.3 P <sub>10</sub> = 4.6 Q <sub>1</sub> = 8.0 Median = 12.8 Q <sub>3</sub> = 17.9 P <sub>90</sub> = 23.9 P <sub>99</sub> = 34.6		Hours of Calibration: 35																									
				Percent Operational Time: 100.0																									
Day	Hourly Period Ending At																								Daily Average	Daily Maximum			
	1	2	3	4	5	6	7	8	9	10	11	12	13	14	15	16	17	18	19	20	21	22	23	24					
1-Oct	7.6	Z	7.6	13.3	11.6	7.4	5.1	5.2	4.5	4.9	4.4	4.9	3.7	2.0	3.3	3.4	3.3	3.0	2.6	2.4	3.3	3.2	2.3	1.6	4.80	13.25			
2-Oct	1.6	Z	2.4	2.9	2.9	3.4	5.1	5.8	6.7	6.8	6.9	7.3	8.3	8.4	8.2	8.8	9.7	11.7	13.3	16.5	15.4	14.5	13.7	11.4	8.34	16.46			
3-Oct	10.3	Z	7.3	7.1	5.9	6.6	7.7	7.5	8.7	10.9	15.5	18.8	22.2	26.2	29.0	32.6	33.5	25.3	22.5	22.3	19.8	19.6	18.7	15.5	17.11	33.51			
4-Oct	13.5	Z	13.5	12.6	14.9	9.2	9.2	9.4	10.6	11.9	15.0	19.6	30.2	35.1	36.6	37.6	37.9	35.9	32.5	32.7	30.2	23.8	22.0	19.4	22.32	37.93			
5-Oct	17.9	Z	18.0	17.6	17.8	14.9	12.5	7.3	11.3	15.1	17.6	26.2	31.5	33.0	32.2	32.1	31.1	26.7	23.3	24.3	21.6	18.9	16.2	14.8	20.95	33.04			
6-Oct	13.9	Z	10.5	11.2	3.3	7.8	5.8	4.5	4.2	4.9	5.9	11.6	19.6	18.0	14.1	23.8	31.9	29.9	25.5	25.0	22.4	18.3	18.0	22.3	15.31	31.86			
7-Oct	15.0	Z	15.8	17.7	17.3	15.9	15.0	14.2	11.2	6.9	4.9	3.6	9.5	5.4	4.6	8.5	8.7	14.8	15.1	13.5	5.5	4.8	0.3	1.4	9.98	17.75			
8-Oct	1.3	Z	0.5	5.3	11.0	7.9	3.2	3.3	5.4	3.6	3.8	5.4	8.0	8.8	8.6	6.0	5.4	12.5	16.3	15.8	12.7	11.0	9.9	11.1	7.68	16.26			
9-Oct	10.9	Z	10.6	10.8	11.6	11.6	12.4	13.1	14.1	14.2	16.2	17.7	18.0	20.6	31.5	29.4	24.3	24.1	22.1	18.4	13.7	15.0	14.9	14.4	16.94	31.53			
10-Oct	10.6	Z	7.6	8.6	10.0	13.4	8.6	12.8	10.8	11.6	7.7	3.6	4.2	6.4	8.4	6.2	3.2	4.3	4.9	6.6	8.7	8.4	7.4	7.2	7.88	13.40			
11-Oct	7.0	Z	2.9	4.0	3.0	4.0	2.3	1.3	0.2	0.7	1.8	2.3	2.8	2.8	3.9	4.3	6.7	6.7	7.9	7.6	9.0	9.2	10.6	9.3	4.79	10.55			
12-Oct	9.5	Z	9.4	9.2	11.2	11.3	12.2	11.3	8.8	9.8	12.2	8.1	10.2	9.7	10.5	13.6	10.7	7.7	6.5	6.1	7.6	9.2	10.6	13.5	9.97	13.65			
13-Oct	13.2	Z	11.4	11.1	6.7	8.8	12.4	9.0	5.2	8.7	15.3	15.7	13.9	12.5	13.9	13.5	10.2	8.4	8.6	7.3	6.0	8.3	8.9	10.56	15.70				
14-Oct	9.2	Z	8.3	5.4	6.5	2.9	3.7	3.5	3.9	4.8	5.9	8.2	11.5	13.7	14.5	12.6	13.3	16.9	14.1	12.6	13.4	15.7	15.3	15.4	10.04	16.91			
15-Oct	17.2	Z	17.0	14.3	12.0	10.2	9.9	12.5	13.9	16.9	18.2	18.4	19.9	25.8	31.0	31.6	29.0	28.2	27.3	25.7	18.3	16.7	16.4	17.5	19.47	31.56			
16-Oct	17.0	Z	16.5	17.2	15.7	14.1	16.3	17.2	18.8	18.4	14.3	15.3	29.3	36.9	35.9	33.9	29.2	27.3	23.5	19.2	15.4	14.6	6.8	9.2	20.09	36.90			
17-Oct	12.0	Z	10.6	9.6	9.6	6.7	6.7	7.2	12.1	14.2	16.5	24.0	27.5	22.3	8.4	9.2	12.9	8.7	8.9	10.9	7.2	12.3	15.9	15.4	12.55	27.46			
18-Oct	16.1	Z	19.9	19.0	17.3	15.8	14.9	12.0	12.9	C	C	C	C	31.1	33.3	31.5	31.9	31.9	26.3	21.2	21.1	16.8	16.8	16.5	21.38	33.26			
19-Oct	15.0	Z	18.4	14.4	13.2	13.0	8.8	10.9	11.5	14.9	13.5	22.3	27.9	29.6	29.9	31.1	27.8	27.8	25.9	18.1	15.8	11.9	8.7	9.4	18.26	31.07			
20-Oct	15.9	Z	13.3	13.5	10.9	10.9	13.0	11.7	8.4	5.7	6.9	4.8	4.3	5.8	4.7	11.2	16.2	18.6	19.9	17.4	14.5	13.7	10.7	12.7	11.51	19.91			
21-Oct	9.5	Z	10.2	8.8	8.4	7.9	7.1	7.1	7.4	9.3	9.4	13.6	18.1	22.8	26.2	27.5	24.4	17.1	16.4	13.3	14.2	11.7	12.1	14.5	13.78	27.49			
22-Oct	15.2	Z	10.5	9.1	5.7	5.4	5.4	4.6	8.0	12.0	9.8	6.2	4.6	11.3	15.5	20.8	25.0	22.8	18.6	20.0	21.1	21.7	21.7	22.5	13.80	24.98			
23-Oct	19.0	Z	15.8	19.7	18.8	19.2	19.7	18.5	18.5	18.1	19.6	20.8	19.8	19.7	29.0	28.9	25.8	24.0	19.6	17.7	19.6	18.0	18.4	17.0	20.23	29.00			
24-Oct	18.3	Z	20.6	21.3	22.1	22.6	22.1	20.7	20.4	27.3	28.4	16.1	15.7	18.5	15.0	20.8	21.2	18.9	22.7	21.9	22.1	19.9	18.2	18.4	20.58	28.43			
25-Oct	23.3	Z	15.2	11.3	8.8	9.7	10.4	9.0	7.7	6.5	10.2	5.6	3.0	4.6	5.7	6.7	8.7	10.9	13.6	13.9	13.6	13.2	11.6	12.6	10.26	23.27			
26-Oct	14.0	Z	11.8	10.5	11.1	11.5	11.0	10.3	13.9	16.8	18.0	16.4	15.8	13.8	13.1	14.4	13.5	12.1	10.7	8.8	8.6	8.4	7.9	7.8	12.19	18.02			
27-Oct	7.4	Z	7.4	6.7	7.3	6.7	5.1	3.7	4.3	7.3	12.8	17.5	23.0	23.4	25.7	29.3	23.9	23.6	20.3	17.8	15.9	12.3	8.9	9.8	13.92	29.34			
28-Oct	11.6	Z	12.4	13.3	16.2	17.5	15.9	15.5	18.2	16.7	16.5	14.2	12.0	17.5	20.6	19.3	18.8	18.7	18.8	14.1	12.3	9.3	7.4	6.0	14.90	20.58			
29-Oct	4.2	Z	7.6	6.5	6.5	4.3	3.9	2.3	3.8	6.4	10.8	11.5	12.8	12.9	14.0	16.4	16.9	18.1	18.6	18.7	18.5	18.6	19.4	17.9	11.76	19.44			
30-Oct	13.1	Z	10.9	11.4	10.7	9.9	8.9	10.0	11.9	11.5	13.3	14.9	16.7	16.2	13.9	10.4	2.6	5.0	10.1	7.8	9.0	13.3	15.0	14.8	11.37	16.70			
31-Oct	15.3	Z	13.4	13.8	13.6	13.8	16.7	16.8	16.8	17.1	14.0	9.8	3.4	6.7	1.9	1.4	3.5	10.1	12.9	9.5	7.6	5.5	4.6	3.9	10.09	17.06			
		12.45	--	11.53	11.52	11.02	10.46	10.02	9.62	10.13	11.13	12.19	12.81	14.91	16.82	17.52	18.63	18.22	17.86	17.07	15.76	14.36	13.42	12.53	12.64	Diurnal Average			
		23.27	--	20.64	21.32	22.09	22.60	22.08	20.70	20.40	27.29	28.43	26.19	31.45	36.90	36.59	37.60	37.93	35.87	32.47	32.75	30.21	23.84	22.04	22.48	Diurnal Maximum			
Z - zerospan		C - Calibration																											
Alberta Ambient Air Quality Objectives (AAAQO):		1-hr 82.5 ppb		24-hr -- ppb																									



**WCAS - Genesee**  
**Eight Hour Running Averages**

**Ozone (O<sub>3</sub>) - ppb**  
**October 2017**

Maximum Value: 34.81 ppb on Oct 4 21:00		Maximum Daily Average: 21.81 ppb on Oct 5		Hours in Service: 744																																													
Minimum Value: 1.8 ppb on Oct 11 14:00		Minimum Daily Average: 4.55 ppb on Oct 11		Hours of Data: 737																																													
Maximum Diurnal Average: 17.16 ppb at hour 20		Minimum Diurnal Average: 10.61 ppb at hour 9		Hours of Missing Data: 7																																													
Monthly Average: 13.551 ppb		Percentiles: P <sub>1</sub> = 2.4 P <sub>10</sub> = 6.1 Q <sub>1</sub> = 8.9 Median = 12.7 Q <sub>3</sub> = 17.5 P <sub>90</sub> = 22.5 P <sub>99</sub> = 31.0		Hours of Calibration: 7																																													
				Percent Operational Time: 100.0																																													
Day	Hourly Period Ending At																								Daily Average	Daily Maximum																							
	1	2	3	4	5	6	7	8	9	10	11	12	13	14	15	16	17	18	19	20	21	22	23	24																									
1-Oct	18.0	16.3	15.2	13.9	12.0	9.9	8.6	8.2	7.8	7.4	7.0	6.0	5.0	4.3	4.1	3.9	3.7	3.5	3.3	3.0	2.9	3.1	2.9	2.7	7.20	18.01																							
2-Oct	2.5	2.4	2.4	2.5	2.4	2.5	2.8	3.5	4.2	4.5	5.1	5.6	6.3	6.9	7.3	7.7	8.1	8.7	9.5	10.6	11.5	12.3	12.9	13.3	6.48	13.27																							
3-Oct	13.3	13.6	12.7	11.4	10.0	8.9	8.0	7.5	7.2	7.7	8.7	10.2	12.2	14.7	17.3	20.5	23.6	25.4	26.3	26.7	26.4	25.6	24.3	22.2	16.02	26.70																							
4-Oct	19.7	18.8	17.6	16.2	15.5	14.0	12.6	11.8	11.4	11.4	11.6	12.5	14.4	17.6	21.1	24.6	28.0	31.0	33.2	34.8	34.8	33.4	31.6	29.3	21.11	34.81																							
5-Oct	26.8	25.5	23.4	21.3	19.5	18.2	16.9	15.1	14.2	14.3	14.3	15.3	17.0	19.3	21.8	24.9	27.3	28.8	29.5	29.3	28.0	26.3	24.3	22.1	21.81	29.52																							
6-Oct	20.0	19.0	17.2	15.3	12.7	11.1	9.6	8.1	6.7	6.5	5.9	6.0	8.0	9.3	10.3	12.8	16.2	19.3	21.8	23.5	23.8	23.8	24.3	24.1	14.81	24.33																							
7-Oct	22.0	20.9	19.5	18.5	17.8	17.4	17.0	15.8	15.3	14.2	12.9	11.1	10.1	8.8	7.5	6.8	6.5	7.5	8.8	10.0	9.5	9.4	8.9	8.0	12.69	22.03																							
8-Oct	7.1	6.0	3.9	2.7	3.5	4.0	4.4	4.7	5.2	5.0	5.4	5.5	5.1	5.2	5.9	6.2	6.2	7.3	8.9	10.2	10.8	11.0	11.2	11.8	6.55	11.81																							
9-Oct	12.5	12.5	11.7	11.0	10.9	10.9	11.3	11.6	12.0	12.3	13.0	13.9	14.7	15.8	18.2	20.2	21.5	22.7	23.5	23.5	23.0	22.3	20.2	18.4	16.15	23.54																							
10-Oct	16.7	15.6	13.5	12.1	11.6	11.4	10.5	10.2	10.3	10.4	10.4	9.8	9.1	8.2	8.2	7.4	6.4	5.5	5.2	5.5	6.1	6.3	6.2	6.3	9.29	16.66																							
11-Oct	6.8	7.2	6.9	6.5	5.7	5.1	4.3	3.5	2.5	2.3	2.2	1.9	1.9	1.8	2.0	2.4	3.2	3.9	4.7	5.3	6.1	6.9	7.7	8.4	4.55	8.37																							
12-Oct	8.7	9.0	9.2	9.5	9.8	10.1	10.3	10.6	10.5	10.4	10.8	10.6	10.5	10.3	10.1	10.4	10.6	10.3	9.6	9.4	9.1	9.0	9.0	9.0	9.87	10.76																							
13-Oct	9.3	9.6	10.2	11.0	10.8	10.8	11.0	10.4	9.2	9.2	9.7	10.2	11.1	11.6	11.8	12.4	13.4	13.6	12.7	11.9	11.0	10.2	9.5	8.9	10.81	13.61																							
14-Oct	8.4	8.1	8.1	7.6	7.5	7.1	6.4	5.6	4.9	4.9	4.6	4.9	5.5	6.9	8.2	9.4	10.5	12.1	13.1	13.6	13.9	14.1	14.2	14.6	8.92	14.57																							
15-Oct	15.1	14.8	15.2	15.5	15.3	14.5	13.7	13.3	12.8	13.3	13.5	14.0	15.0	16.9	19.6	21.9	23.8	25.3	26.4	27.3	27.1	26.0	24.2	22.4	18.62	27.32																							
16-Oct	20.9	19.8	18.3	17.1	16.7	16.3	16.3	16.3	16.5	16.8	16.5	16.3	18.0	20.8	23.3	25.4	26.7	27.8	28.9	29.4	27.7	24.9	21.2	18.2	20.83	29.41																							
17-Oct	16.0	14.4	12.5	11.2	10.3	9.2	9.2	8.9	8.9	9.6	10.3	12.1	14.4	16.3	16.5	16.8	16.9	16.2	15.2	13.6	11.1	9.8	10.8	11.5	12.57	16.86																							
18-Oct	11.9	12.4	14.0	15.1	16.6	17.1	16.9	16.4	16.0	16.0	15.3	C	C	C	C	C	C	C	31.0	29.6	28.5	26.7	24.7	22.8	--	31.00																							
19-Oct	20.7	19.1	18.0	17.0	15.9	15.3	14.2	13.4	12.9	13.1	12.5	13.5	15.3	17.4	20.1	22.6	24.6	26.3	27.8	27.3	25.8	23.5	20.9	18.2	18.98	27.80																							
20-Oct	16.7	15.1	13.3	12.6	11.9	11.8	12.4	12.8	11.7	10.9	10.1	9.0	8.2	7.6	6.5	6.5	7.4	9.1	10.7	12.3	13.5	14.5	15.3	15.5	11.48	16.69																							
21-Oct	14.6	14.1	12.7	11.4	10.6	9.7	9.2	8.4	8.1	8.3	8.2	8.8	10.0	11.8	14.2	16.8	18.9	19.9	20.8	20.7	20.2	18.9	17.1	15.5	13.70	20.76																							
22-Oct	14.3	13.9	13.1	12.5	11.3	10.4	9.4	8.0	7.0	7.6	7.5	7.1	7.0	7.7	9.0	11.0	13.2	14.5	15.6	17.3	19.4	20.7	21.5	21.7	12.52	21.66																							
23-Oct	20.9	20.6	20.3	20.2	19.9	19.5	19.3	18.7	18.6	18.5	19.0	19.2	19.3	19.3	20.5	21.8	22.7	23.5	23.4	23.1	23.0	22.8	21.5	20.0	20.65	23.45																							
24-Oct	19.1	18.4	18.5	19.0	19.4	20.1	20.6	21.1	21.4	22.1	23.1	22.5	21.7	21.1	20.3	20.3	20.4	19.3	18.6	19.3	20.1	20.3	20.7	20.4	20.33	23.12																							
25-Oct	20.7	20.9	19.9	18.3	16.4	15.0	13.9	12.5	10.3	9.8	9.2	8.5	7.8	7.1	6.5	6.3	6.4	6.9	7.4	8.4	9.7	10.8	11.5	12.3	11.52	20.93																							
26-Oct	12.9	13.2	13.0	12.5	12.1	11.9	11.8	11.5	11.4	12.1	12.9	13.6	14.2	14.5	14.8	15.3	15.2	14.7	13.7	12.8	11.9	11.2	10.6	9.7	12.81	15.29																							
27-Oct	9.0	8.5	8.1	7.8	7.6	7.3	6.9	6.3	5.9	6.1	6.7	8.1	10.0	12.1	14.7	17.9	20.4	22.4	23.3	23.4	22.5	21.1	19.0	16.6	12.99	23.38																							
28-Oct	15.0	13.8	12.7	12.0	12.1	12.8	13.8	14.6	15.6	15.7	16.2	16.3	15.8	15.8	16.4	16.9	16.9	17.2	17.5	17.5	17.5	16.5	14.8	13.2	15.28	17.51																							
29-Oct	11.4	10.3	8.7	7.6	6.8	6.1	5.6	5.0	5.0	5.2	5.6	6.2	7.0	8.0	9.3	11.1	12.7	14.2	15.1	16.0	16.8	17.5	18.2	18.3	10.31	18.34																							
30-Oct	17.9	17.8	16.7	15.7	14.6	13.3	11.8	10.7	10.5	10.7	11.0	11.4	12.2	12.9	13.6	13.6	12.5	11.6	11.2	10.4	9.4	9.0	9.2	9.7	12.39	17.87																							
31-Oct	11.3	12.2	12.7	13.5	14.2	14.3	14.5	14.8	15.0	15.2	15.3	14.8	13.5	12.6	10.8	8.9	7.2	6.3	6.2	6.2	6.7	6.5	6.9	7.2	11.12	15.32																							
																								14.84	14.32	13.52	12.85	12.30	11.80	11.39	10.95	10.61	10.70	10.79	10.83	11.34	12.10	12.99	14.08	15.04	15.82	16.87	17.16	17.03	16.60	15.98	15.23	Diurnal Average	
																								26.80	25.50	23.45	21.28	19.90	20.06	20.58	21.11	21.41	22.14	23.12	22.47	21.67	21.15	23.27	25.36	27.99	30.99	33.17	34.81	34.81	33.41	31.59	29.31	Diurnal Maximum	
C - Calibration																																																	





**WCAS - Genesee**  
**Summary of Hourly Averages**

**Nitrogen Oxide (NO) - ppb**  
**October 2017**

Maximum Value: 7.81 ppb on Oct 16 12:00		Maximum Daily Average: 1.03 ppb on Oct 10		Hours in Service: 744																							
Minimum Value: 0.0 ppb on Oct 18 18:00		Minimum Daily Average: 0.21 ppb on Oct 15		Hours of Data: 707																							
Maximum Diurnal Average: 1.40 ppb at hour 12		Minimum Diurnal Average: 0.23 ppb at hour 20		Hours of Missing Data: 37																							
Monthly Average: 0.507 ppb		Percentiles: P <sub>1</sub> = 0.1 P <sub>10</sub> = 0.2 Q <sub>1</sub> = 0.2 Median = 0.3 Q <sub>3</sub> = 0.5 P <sub>90</sub> = 1.1 P <sub>99</sub> = 3.8		Hours of Calibration: 37																							
				Percent Operational Time: 100.0																							
Day	Hourly Period Ending At																								Daily Average	Daily Maximum	
	1	2	3	4	5	6	7	8	9	10	11	12	13	14	15	16	17	18	19	20	21	22	23	24			
1-Oct	0.4	0.4	Z	0.2	0.3	0.4	0.6	0.9	1.1	0.7	0.5	0.4	1.2	1.3	0.6	0.5	0.5	0.4	0.4	0.4	0.4	0.4	0.4	0.4	0.55	1.28	
2-Oct	0.4	0.4	Z	0.3	0.3	0.3	0.2	0.2	0.2	0.2	0.2	0.2	0.2	0.2	0.2	0.2	0.2	0.2	0.2	0.2	0.2	0.2	0.2	0.2	0.24	0.39	
3-Oct	0.2	0.2	Z	0.3	0.6	0.3	0.3	0.5	1.4	1.2	0.7	0.5	0.4	0.3	0.3	0.3	0.2	0.2	0.2	0.2	0.2	0.2	0.2	0.40	1.36		
4-Oct	0.2	0.2	Z	0.2	0.2	0.3	0.3	0.5	1.0	1.4	1.3	1.4	0.5	0.3	0.3	0.2	0.2	0.1	0.1	0.1	0.1	0.2	0.2	0.2	0.42	1.42	
5-Oct	0.2	0.2	Z	0.2	0.2	0.3	0.2	0.5	0.9	1.2	1.2	0.9	0.6	0.4	0.3	0.3	0.3	0.2	0.1	0.1	0.1	0.1	0.2	0.2	0.39	1.23	
6-Oct	0.2	0.2	Z	0.3	0.9	0.3	0.4	0.6	1.1	1.3	1.1	0.9	0.5	1.1	2.2	0.5	0.4	0.2	0.2	0.2	0.2	0.2	0.3	0.2	0.58	2.20	
7-Oct	0.3	0.3	Z	0.2	0.2	0.2	0.2	0.2	0.3	0.3	1.4	1.1	1.3	1.6	1.1	0.5	0.7	0.5	0.4	0.3	0.5	1.0	2.4	1.2	0.70	2.39	
8-Oct	1.0	2.4	Z	0.7	0.3	0.3	0.9	0.7	0.7	1.2	1.2	1.0	1.1	1.1	1.1	1.3	1.2	0.7	0.3	0.3	0.3	0.3	0.3	0.2	0.80	2.43	
9-Oct	0.2	0.2	Z	0.2	0.2	0.2	0.2	0.2	0.3	0.4	0.5	0.5	0.4	0.3	0.1	0.2	0.2	0.1	0.1	0.2	0.2	0.2	0.2	0.2	0.24	0.46	
10-Oct	0.2	0.2	Z	0.3	0.3	0.3	0.2	0.3	0.4	0.9	1.9	4.5	4.1	2.5	1.8	1.7	1.4	0.6	0.4	0.4	0.3	0.3	0.3	0.3	1.03	4.53	
11-Oct	0.3	0.4	Z	0.4	0.5	0.4	0.5	0.6	0.8	0.8	0.7	0.6	0.7	0.6	0.5	0.5	0.4	0.3	0.3	0.3	0.3	0.3	0.2	0.3	0.46	0.76	
12-Oct	0.2	0.3	Z	0.3	0.2	0.2	0.2	0.2	0.3	0.4	0.6	2.1	1.3	1.1	0.9	0.4	0.5	0.4	0.3	0.3	0.3	0.3	0.2	0.2	0.50	2.07	
13-Oct	0.2	0.2	Z	0.2	0.3	0.3	0.2	0.3	0.7	1.2	0.4	0.4	0.6	0.8	0.5	0.5	0.4	0.3	0.2	0.2	0.3	0.3	0.3	0.3	0.39	1.21	
14-Oct	0.2	0.2	Z	0.3	0.3	0.3	0.3	0.4	0.6	0.8	0.8	0.7	0.6	0.5	0.4	0.5	0.3	0.2	0.2	0.2	0.3	0.2	0.2	0.2	0.38	0.85	
15-Oct	0.2	0.2	Z	0.2	0.2	0.2	0.2	0.2	0.3	0.3	0.3	0.4	0.4	0.3	0.2	0.1	0.1	0.1	0.1	0.1	0.2	0.2	0.2	0.2	0.21	0.45	
16-Oct	0.2	0.2	Z	0.2	0.2	0.2	0.2	0.2	0.3	0.3	5.3	7.8	2.8	0.1	0.1	0.2	0.3	0.2	0.3	0.3	0.2	0.2	0.2	0.3	0.89	7.81	
17-Oct	0.3	0.2	Z	0.3	0.3	0.3	0.3	0.4	0.4	0.5	0.7	1.5	1.1	0.7	0.9	0.7	0.3	0.3	0.3	0.2	0.6	0.3	0.2	0.2	0.46	1.46	
18-Oct	0.2	0.2	Z	0.2	0.1	0.1	0.1	0.2	0.6	C	C	C	C	C	C	0.1	0.1	0.0	0.1	0.1	0.1	0.2	0.2	0.2	--	0.60	
19-Oct	0.2	0.2	Z	0.2	0.3	0.3	0.3	0.3	0.7	0.9	1.2	0.9	0.4	0.5	1.0	0.4	0.3	0.1	0.4	0.2	0.8	1.1	0.2	0.3	0.48	1.18	
20-Oct	0.3	0.2	Z	0.2	0.2	0.2	0.2	0.3	0.5	1.0	1.3	2.1	3.1	3.1	3.4	3.1	0.9	0.3	0.3	0.2	0.5	0.5	0.3	0.3	0.98	3.38	
21-Oct	0.3	0.2	Z	0.2	0.2	0.2	0.2	0.3	1.3	1.3	1.9	1.1	0.9	0.7	0.5	0.6	0.5	0.3	0.2	0.2	0.2	0.2	0.2	0.2	0.53	1.92	
22-Oct	0.2	0.2	Z	0.2	0.3	0.3	0.3	0.4	0.5	0.8	2.9	3.8	6.0	3.8	1.1	0.7	0.3	0.2	0.2	0.2	0.2	0.2	0.2	0.2	1.00	5.96	
23-Oct	0.2	0.2	Z	0.2	0.2	0.2	0.2	0.2	0.3	0.5	0.4	0.4	0.5	0.7	0.4	1.5	0.7	0.2	0.1	0.2	0.2	0.2	0.2	0.2	0.35	1.45	
24-Oct	0.2	0.2	Z	0.2	0.2	0.2	0.2	0.2	0.6	0.4	0.8	3.3	1.6	0.4	1.7	1.2	0.6	0.3	0.2	0.2	0.2	0.2	0.2	0.2	0.59	3.26	
25-Oct	0.1	0.2	Z	0.3	0.3	0.3	0.3	0.3	0.4	0.6	0.4	0.9	1.3	0.3	0.2	0.2	0.2	0.2	0.2	0.1	0.2	0.1	0.1	0.1	0.32	1.26	
26-Oct	0.1	0.1	Z	0.2	0.2	0.2	0.1	0.2	0.2	0.2	0.3	0.4	0.5	0.8	0.7	0.6	0.5	0.3	0.3	0.3	0.3	0.3	0.3	0.2	0.3	0.32	0.77
27-Oct	0.3	0.3	Z	0.3	0.3	0.3	0.3	0.5	1.3	1.8	1.3	1.3	0.6	0.5	0.6	0.4	0.3	0.2	0.2	0.2	0.3	0.3	0.3	0.3	0.53	1.77	
28-Oct	0.3	0.4	Z	0.3	0.2	0.2	0.2	0.2	0.2	0.4	1.0	1.4	0.5	0.3	0.3	0.2	0.2	0.3	0.2	0.3	0.3	0.3	0.3	0.4	0.37	1.44	
29-Oct	0.6	0.3	Z	0.4	0.7	0.5	0.7	1.5	1.0	0.5	0.3	0.2	0.2	0.2	0.2	0.2	0.2	0.2	0.2	0.2	0.2	0.1	0.2	0.39	1.47		
30-Oct	0.2	0.2	Z	0.2	0.2	0.2	0.2	0.2	0.3	0.5	0.5	0.5	0.5	0.7	0.8	1.1	1.3	0.9	0.4	0.4	0.3	0.3	0.2	0.2	0.45	1.30	
31-Oct	0.2	0.2	Z	0.2	0.2	0.2	0.2	0.2	0.2	0.3	0.4	0.6	1.3	1.0	1.7	1.8	1.1	0.4	0.3	0.3	0.3	0.2	0.2	0.2	0.51	1.78	
		0.27	0.31	--	0.26	0.29	0.26	0.29	0.38	0.61	0.74	1.05	1.40	1.17	0.88	0.81	0.67	0.47	0.30	0.23	0.23	0.27	0.29	0.30	0.27	Diurnal Average	
		1.03	2.43	--	0.65	0.94	0.47	0.94	1.47	1.36	1.77	5.33	7.81	5.96	3.85	3.38	3.07	1.44	0.94	0.43	0.39	0.79	1.06	2.39	1.16	Diurnal Maximum	
Z - zerospan		C - Calibration																									
Alberta Ambient Air Quality Objectives (AAAQO):		1-hr --- ppb																						24-hr --- ppb			



**WCAS - Genesee**  
**Summary of Hourly Averages**

**Nitrogen Dioxide (NO<sub>2</sub>) - ppb**  
**October 2017**

Maximum Value: 11.07 ppb on Oct 16 12:00		Maximum Daily Average: 4.68 ppb on Oct 10		Hours in Service: 744																													
Minimum Value: 0.3 ppb on Oct 9 15:00		Minimum Daily Average: 1.17 ppb on Oct 2		Hours of Data: 707																													
Maximum Diurnal Average: 3.21 ppb at hour 12		Minimum Diurnal Average: 2.27 ppb at hour 4		Hours of Missing Data: 37																													
Monthly Average: 2.594 ppb		Percentiles: P <sub>1</sub> = 0.6 P <sub>10</sub> = 1.1 Q <sub>1</sub> = 1.5 Median = 2.1 Q <sub>3</sub> = 3.1 P <sub>90</sub> = 4.8 P <sub>99</sub> = 8.6		Hours of Calibration: 37																													
				Percent Operational Time: 100.0																													
Day	Hourly Period Ending At																								Daily Average	Daily Maximum							
	1	2	3	4	5	6	7	8	9	10	11	12	13	14	15	16	17	18	19	20	21	22	23	24									
1-Oct	5.3	5.6	Z	3.0	3.1	4.3	5.2	5.2	4.4	2.8	2.3	2.0	3.4	4.9	2.9	2.1	2.0	1.8	1.5	1.4	1.3	1.4	1.4	1.4	2.99	5.58							
2-Oct	1.3	1.2	Z	1.3	1.3	1.2	1.0	0.9	0.8	0.8	0.8	0.8	0.8	0.9	1.0	1.1	1.2	1.2	1.2	1.0	1.1	1.2	1.6	3.1	1.17	3.06							
3-Oct	3.3	4.3	Z	5.0	5.8	4.5	2.2	2.5	2.8	2.3	1.7	1.5	1.3	1.2	1.4	1.3	1.2	1.7	1.9	1.9	1.9	2.0	2.4	2.1	2.44	5.80							
4-Oct	2.4	3.4	Z	3.4	3.2	6.2	5.0	3.0	2.8	2.8	2.8	3.2	1.7	1.2	1.4	1.3	1.2	1.5	3.2	4.1	2.5	2.4	1.9	1.9	2.72	6.21							
5-Oct	2.0	2.0	Z	2.0	2.1	2.2	2.4	2.6	2.4	2.8	2.8	2.1	1.6	1.3	1.1	1.2	1.4	1.6	1.8	1.4	2.1	2.4	2.9	2.9	2.06	2.90							
6-Oct	3.2	3.7	Z	3.6	5.7	2.6	2.7	3.1	3.2	3.7	3.5	3.0	2.4	3.1	5.6	2.5	2.7	1.7	1.6	1.5	1.6	1.6	2.0	1.3	2.85	5.66							
7-Oct	1.9	2.2	Z	2.2	2.0	1.7	1.7	1.6	2.0	2.0	3.9	4.5	5.3	4.5	4.2	2.8	3.5	3.8	3.2	2.8	3.4	5.2	7.6	5.9	3.39	7.63							
8-Oct	4.7	5.4	Z	2.9	1.8	1.9	5.3	5.2	5.3	6.4	6.0	4.8	4.1	3.9	4.1	4.5	4.8	3.8	1.8	1.8	2.1	2.0	1.8	1.6	3.75	6.39							
9-Oct	1.8	2.1	Z	1.7	1.7	1.7	1.7	1.8	1.8	1.8	1.9	1.8	1.7	1.4	0.3	1.2	0.9	0.6	0.7	1.1	1.9	1.7	1.6	1.6	1.50	2.13							
10-Oct	1.7	2.0	Z	1.9	1.8	2.0	1.9	2.2	2.3	2.6	5.7	9.7	10.7	9.6	8.2	8.0	8.0	7.2	6.4	4.1	3.7	3.1	2.6	2.2	4.68	10.74							
11-Oct	2.0	1.8	Z	1.4	1.4	1.3	1.5	1.6	1.8	1.8	1.7	1.7	1.7	1.7	1.6	1.6	1.4	1.4	1.3	1.2	1.1	1.1	1.0	1.1	1.49	2.00							
12-Oct	1.1	1.2	Z	1.1	1.0	1.0	0.9	1.4	1.4	1.2	1.7	4.9	3.6	4.1	4.4	2.4	3.5	4.6	4.4	4.4	4.8	3.7	2.7	2.1	2.69	4.93							
13-Oct	2.3	2.4	Z	3.0	2.5	2.4	2.6	2.1	1.8	2.2	1.4	1.3	1.7	2.1	1.8	2.0	1.8	2.1	2.9	2.7	2.5	2.4	2.2	2.3	2.20	3.03							
14-Oct	2.4	2.5	Z	2.3	2.7	2.7	2.7	2.8	2.7	2.5	2.4	2.2	2.0	2.0	2.2	3.0	2.2	1.4	1.3	1.5	1.6	1.3	1.2	1.4	2.14	3.01							
15-Oct	1.2	1.1	Z	1.6	1.8	1.7	1.7	1.4	1.5	1.2	1.3	1.4	1.3	0.9	0.6	0.5	0.7	1.2	1.4	1.3	2.1	2.4	2.1	2.0	1.40	2.38							
16-Oct	1.9	1.9	Z	2.1	2.1	4.2	3.0	2.2	1.7	1.7	8.2	11.1	5.1	0.6	0.9	1.5	2.5	2.1	3.8	4.7	4.5	3.7	4.8	4.4	3.43	11.07							
17-Oct	3.4	3.4	Z	3.3	2.9	3.4	3.5	3.7	2.5	1.9	2.0	1.5	1.7	2.3	4.2	4.7	2.7	2.1	1.6	1.3	3.2	2.3	1.4	1.2	2.61	4.74							
18-Oct	1.4	1.5	Z	1.3	1.2	1.3	1.5	2.1	2.8	C	C	C	C	C	C	1.3	1.4	1.5	2.0	2.2	2.2	2.4	2.6	2.4	--	2.78							
19-Oct	2.0	1.9	Z	2.3	2.7	2.8	3.2	2.5	2.6	2.3	2.4	1.9	1.4	1.6	2.2	2.0	2.2	1.8	2.6	3.8	4.0	5.7	3.5	3.8	2.67	5.73							
20-Oct	3.1	2.6	Z	1.9	1.6	2.8	2.7	2.3	3.0	3.7	4.1	4.6	6.6	6.9	8.9	5.9	3.6	2.3	1.8	2.0	2.2	2.8	3.6	2.2	3.53	8.86							
21-Oct	1.9	2.0	Z	1.7	1.9	2.1	2.2	2.5	3.6	2.5	3.2	2.5	2.2	1.8	1.6	2.0	2.9	4.5	4.5	4.4	4.2	5.9	5.3	3.8	3.01	5.87							
22-Oct	3.4	2.7	Z	2.8	2.4	2.3	2.3	2.8	2.8	2.2	4.3	6.1	9.4	6.4	3.2	2.4	1.3	1.7	1.8	1.7	1.4	1.2	1.2	1.2	2.92	9.40							
23-Oct	1.3	1.4	Z	1.5	2.7	1.8	1.5	2.4	1.9	2.0	1.8	1.6	1.7	2.0	1.0	4.9	5.7	5.9	6.4	5.4	3.5	2.7	1.9	1.8	2.74	6.37							
24-Oct	1.4	1.3	Z	1.3	1.3	1.4	1.6	1.7	3.5	2.5	2.0	5.9	3.8	0.7	5.9	4.7	7.3	6.7	2.9	1.6	1.6	1.7	2.7	2.9	2.89	7.32							
25-Oct	1.8	1.5	Z	1.8	1.8	1.6	1.9	3.2	3.0	4.0	2.2	3.1	3.5	1.2	0.8	0.8	1.0	1.0	0.8	0.7	0.7	0.7	0.8	0.7	1.68	4.02							
26-Oct	0.7	0.8	Z	1.1	1.3	1.6	2.3	2.5	2.1	1.3	1.3	1.5	1.7	1.9	1.9	2.0	2.1	2.7	2.9	3.1	3.0	2.9	3.1	2.9	2.03	3.12							
27-Oct	3.0	3.1	Z	2.7	2.6	2.9	3.3	3.7	3.8	3.4	3.0	3.0	1.8	1.7	2.8	1.5	2.6	2.6	3.9	4.0	2.7	3.2	3.0	2.6	2.91	3.99							
28-Oct	2.2	1.9	Z	1.3	0.8	1.0	1.1	1.0	0.9	1.7	2.2	2.6	0.8	0.6	0.6	0.7	0.7	2.8	1.9	1.4	1.1	1.3	2.8	4.1	1.54	4.06							
29-Oct	6.3	3.6	Z	5.0	6.3	5.7	6.0	8.2	6.1	4.0	1.6	1.1	0.9	1.0	0.9	0.9	0.9	0.9	0.9	0.9	0.9	0.9	0.8	1.1	2.82	8.19							
30-Oct	1.4	1.6	Z	1.4	1.6	1.8	2.1	2.1	2.1	2.7	2.3	2.1	1.9	2.2	3.5	4.2	7.8	9.4	5.9	5.9	6.0	4.2	3.9	4.0	3.49	9.44							
31-Oct	3.6	2.4	Z	2.5	2.4	2.3	1.7	1.7	1.6	1.8	2.1	2.8	4.6	3.8	5.7	6.5	5.1	2.7	1.8	1.5	1.4	1.1	1.0	1.0	2.67	6.50							
		2.44	2.41	--	2.27	2.36	2.47	2.53	2.65	2.61	2.50	2.76	3.21	3.01	2.58	2.83	2.63	2.78	2.78	2.58	2.48	2.46	2.47	2.51	2.35	Diurnal Average							
		6.30	5.58	--	5.00	6.28	6.21	5.98	8.19	6.09	6.39	8.16	11.07	10.74	9.65	8.86	8.00	8.00	9.44	6.40	5.85	6.04	5.87	7.63	5.90	Diurnal Maximum							
Z - zerospan		C - Calibration																															
Alberta Ambient Air Quality Objectives (AAAQO):		1-hr 159 ppb				24-hr 106 ppb																											



**WCAS - Genesee**  
**Summary of Hourly Averages**

**NOx (NO<sub>x</sub>) - ppb**  
**October 2017**

Maximum Value: 18.89 ppb on Oct 16 12:00		Maximum Daily Average: 5.68 ppb on Oct 10		Hours in Service: 744																													
Minimum Value: 0.4 ppb on Oct 9 15:00		Minimum Daily Average: 1.39 ppb on Oct 2		Hours of Data: 707																													
Maximum Diurnal Average: 4.56 ppb at hour 12		Minimum Diurnal Average: 2.50 ppb at hour 4		Hours of Missing Data: 37																													
Monthly Average: 3.067 ppb		Percentiles: P <sub>1</sub> = 0.8 P <sub>10</sub> = 1.3 Q <sub>1</sub> = 1.8 Median = 2.5 Q <sub>3</sub> = 3.6 P <sub>90</sub> = 5.7 P <sub>99</sub> = 12.0		Hours of Calibration: 37																													
				Percent Operational Time: 100.0																													
Day	Hourly Period Ending At																								Daily Average	Daily Maximum							
	1	2	3	4	5	6	7	8	9	10	11	12	13	14	15	16	17	18	19	20	21	22	23	24									
1-Oct	5.6	5.9	Z	3.2	3.4	4.7	5.7	6.0	5.4	3.4	2.8	2.4	4.5	6.1	3.4	2.6	2.5	2.2	1.9	1.8	1.6	1.7	1.8	1.9	3.50	6.08							
2-Oct	1.7	1.6	Z	1.6	1.6	1.5	1.2	1.1	0.9	1.0	1.0	1.0	1.1	1.2	1.3	1.4	1.5	1.4	1.2	1.3	1.4	1.8	3.2	1.39	3.21								
3-Oct	3.4	4.5	Z	5.2	6.4	4.8	2.4	3.0	4.1	3.5	2.4	2.0	1.7	1.4	1.7	1.6	1.4	1.9	2.0	2.1	2.1	2.6	2.3	2.81	6.36								
4-Oct	2.5	3.6	Z	3.7	3.4	6.4	5.3	3.5	3.8	4.2	4.1	4.5	2.2	1.6	1.7	1.6	1.3	1.7	3.3	4.2	2.6	2.6	2.1	2.1	3.12	6.45							
5-Oct	2.2	2.3	Z	2.2	2.3	2.4	2.6	3.1	3.3	4.0	4.0	2.9	2.2	1.7	1.4	1.5	1.7	1.8	1.9	1.5	2.2	2.5	3.1	3.1	2.43	4.04							
6-Oct	3.4	3.9	Z	3.8	6.5	2.8	3.0	3.7	4.3	4.9	4.5	3.8	2.8	4.1	7.7	3.0	3.1	1.8	1.8	1.7	1.8	1.8	2.3	1.5	3.39	7.74							
7-Oct	2.2	2.4	Z	2.4	2.1	1.9	1.9	1.8	2.3	2.2	5.2	5.6	6.5	6.0	5.2	3.3	4.2	4.3	3.5	3.2	3.9	6.2	10.0	7.0	4.06	9.97							
8-Oct	5.7	7.7	Z	3.6	2.1	2.2	6.2	5.8	6.0	7.5	7.1	5.8	5.2	4.9	5.2	5.7	5.9	4.5	2.1	2.1	2.3	2.3	2.0	1.9	4.52	7.75							
9-Oct	2.0	2.3	Z	1.9	1.9	1.9	1.9	2.0	2.1	2.2	2.3	2.2	2.1	1.7	0.4	1.4	1.0	0.7	0.8	1.2	2.1	1.9	1.8	1.8	1.73	2.34							
10-Oct	1.9	2.2	Z	2.1	2.1	2.2	2.1	2.4	2.7	3.5	7.6	14.2	14.9	12.1	10.0	9.7	9.4	7.7	6.8	4.4	3.9	3.4	2.9	2.5	5.68	14.86							
11-Oct	2.3	2.1	Z	1.8	1.9	1.7	2.0	2.2	2.5	2.5	2.4	2.3	2.3	2.3	2.1	2.0	1.8	1.8	1.6	1.5	1.4	1.3	1.2	1.3	1.93	2.52							
12-Oct	1.3	1.5	Z	1.4	1.3	1.2	1.1	1.6	1.7	1.6	2.3	6.9	4.9	5.2	5.2	2.8	3.9	4.9	4.7	4.7	5.1	3.9	2.9	2.3	3.15	6.89							
13-Oct	2.5	2.6	Z	3.2	2.7	2.6	2.7	2.3	2.5	3.4	1.8	1.6	2.3	2.8	2.3	2.4	2.2	2.4	3.0	2.9	2.7	2.6	2.5	2.5	2.55	3.39							
14-Oct	2.6	2.6	Z	2.5	2.9	3.0	3.0	3.2	3.3	3.3	3.2	2.9	2.5	2.4	2.6	3.5	2.5	1.6	1.5	1.8	1.8	1.5	1.4	1.5	2.48	3.45							
15-Oct	1.3	1.3	Z	1.7	2.0	1.8	1.9	1.6	1.8	1.5	1.6	1.8	1.7	1.2	0.8	0.7	0.8	1.2	1.5	1.4	2.2	2.5	2.3	2.1	1.59	2.52							
16-Oct	2.0	2.1	Z	2.3	2.3	4.4	3.2	2.4	2.0	2.0	13.5	18.9	7.9	0.8	1.1	1.6	2.8	2.3	4.1	4.9	4.7	3.9	5.0	4.7	4.30	18.89							
17-Oct	3.6	3.7	Z	3.5	3.1	3.7	3.8	4.0	2.9	2.4	2.7	2.9	2.8	3.0	5.0	5.4	3.0	2.4	1.9	1.6	3.8	2.6	1.6	1.4	3.07	5.40							
18-Oct	1.5	1.7	Z	1.4	1.4	1.5	1.7	2.3	3.4	C	C	C	C	C	C	1.5	1.5	1.5	2.0	2.4	2.3	2.5	2.8	2.5	--	3.37							
19-Oct	2.2	2.1	Z	2.5	2.9	3.1	3.5	2.8	3.2	3.2	3.5	2.7	1.8	2.1	3.1	2.4	2.4	1.9	2.9	3.9	4.7	6.7	3.8	4.1	3.11	6.73							
20-Oct	3.4	2.8	Z	2.1	1.8	3.0	2.9	2.6	3.4	4.6	5.4	6.5	9.6	10.0	12.2	8.8	4.4	2.6	2.1	2.2	2.7	3.3	3.9	2.4	4.46	12.18							
21-Oct	2.1	2.2	Z	1.9	2.1	2.3	2.4	2.8	4.8	3.7	5.0	3.6	3.1	2.4	2.1	2.5	3.3	4.8	4.7	4.6	4.4	6.0	5.5	4.0	3.49	6.03							
22-Oct	3.6	2.8	Z	2.9	2.6	2.5	2.5	3.2	3.3	3.0	7.1	9.7	15.3	10.2	4.2	3.0	1.6	1.9	2.0	1.9	1.6	1.4	1.3	1.3	3.87	15.32							
23-Oct	1.5	1.6	Z	1.7	2.8	2.0	1.6	2.6	2.2	2.5	2.1	2.1	2.1	2.7	1.4	6.2	6.4	6.0	6.5	5.5	3.7	2.9	2.1	2.0	3.05	6.46							
24-Oct	1.6	1.5	Z	1.5	1.5	1.6	1.8	1.9	4.0	2.8	2.8	9.1	5.3	1.2	7.5	5.9	7.9	6.9	3.0	1.8	1.8	1.9	2.8	3.0	3.44	9.10							
25-Oct	1.9	1.7	Z	2.0	2.0	1.8	2.1	3.4	3.3	4.6	2.5	4.0	4.7	1.5	1.0	1.0	1.2	1.1	0.9	0.9	0.8	0.8	0.9	0.9	1.97	4.71							
26-Oct	0.8	0.9	Z	1.2	1.4	1.7	2.4	2.6	2.2	1.5	1.6	1.9	2.1	2.6	2.6	2.6	2.5	3.0	3.2	3.4	3.2	3.1	3.3	3.2	2.31	3.38							
27-Oct	3.2	3.3	Z	3.0	2.9	3.2	3.6	4.1	5.1	5.2	4.2	4.3	2.3	2.1	3.3	1.8	2.9	2.8	4.0	4.2	3.0	3.4	3.3	2.9	3.39	5.15							
28-Oct	2.5	2.2	Z	1.5	1.0	1.2	1.3	1.2	1.1	2.1	3.2	4.0	1.2	0.9	0.9	0.9	1.0	3.0	2.1	1.6	1.3	1.6	3.1	4.4	1.88	4.45							
29-Oct	6.9	3.9	Z	5.4	6.9	6.1	6.6	9.6	7.0	4.4	1.8	1.3	1.1	1.2	1.1	1.0	1.0	1.1	1.0	1.1	1.0	1.0	1.0	1.2	3.16	9.58							
30-Oct	1.5	1.8	Z	1.6	1.7	1.9	2.2	2.3	2.3	3.1	2.7	2.6	2.3	2.9	4.2	5.3	8.9	10.3	6.2	6.1	6.3	4.4	4.1	4.1	3.86	10.30							
31-Oct	3.8	2.5	Z	2.7	2.5	2.5	1.9	1.9	1.8	2.1	2.4	3.3	5.9	4.7	7.3	8.2	6.1	3.1	2.0	1.8	1.6	1.4	1.3	1.3	3.12	8.18							
		2.68	2.69	--	2.50	2.63	2.70	2.79	2.99	3.18	3.20	3.76	4.56	4.14	3.43	3.60	3.27	3.22	3.05	2.78	2.69	2.71	2.73	2.79	2.59	Diurnal Average							
		6.87	7.75	--	5.37	6.92	6.45	6.59	9.58	6.97	7.49	13.48	18.89	15.32	12.07	12.18	9.66	9.37	10.30	6.78	6.14	6.29	6.73	9.97	7.01	Diurnal Maximum							
Z - zerospan		C - Calibration																															
Alberta Ambient Air Quality Objectives (AAAQO):		1-hr --- ppb				24-hr --- ppb																											



**WCAS - Genesee**  
**Summary of Hourly Averages**

**PM2.5\_Sharp (PM<sub>2.5</sub>) - µg/m<sup>3</sup>**  
**October 2017**

Maximum Value: 18.92 µg/m <sup>3</sup> on Oct 16 20:00		Maximum Daily Average: 6.52 µg/m <sup>3</sup> on Oct 6		Hours in Service: 744																						
Minimum Value: 1.0 µg/m <sup>3</sup> on Oct 15 12:00		Minimum Daily Average: 1.61 µg/m <sup>3</sup> on Oct 15		Hours of Data: 744																						
Maximum Diurnal Average: 5.04 µg/m <sup>3</sup> at hour 22		Minimum Diurnal Average: 3.04 µg/m <sup>3</sup> at hour 11		Hours of Missing Data: 0																						
Monthly Average: 3.963 µg/m <sup>3</sup>		Percentiles: P <sub>1</sub> = 1.1 P <sub>10</sub> = 1.6 Q <sub>1</sub> = 2.2 Median = 3.1 Q <sub>3</sub> = 5.0 P <sub>90</sub> = 7.2 P <sub>99</sub> = 12.9		Hours of Calibration: 0																						
				Percent Operational Time: 100.0																						
Day	Hourly Period Ending At																								Daily Average	Daily Maximum
	1	2	3	4	5	6	7	8	9	10	11	12	13	14	15	16	17	18	19	20	21	22	23	24		
1-Oct	4.6	4.0	3.9	3.8	4.2	4.9	4.6	4.6	4.2	3.0	2.4	2.4	2.9	3.2	2.7	2.5	2.5	2.5	2.6	2.4	2.3	1.7	1.5	1.2	3.11	4.89
2-Oct	1.2	1.1	1.1	1.2	1.2	1.3	1.5	1.6	1.7	1.5	1.5	1.6	1.8	1.8	1.9	2.1	2.0	2.1	2.1	2.0	2.3	2.2	2.2	2.5	1.74	2.54
3-Oct	2.6	2.4	2.6	2.6	2.9	2.8	2.4	2.6	2.5	2.6	2.5	2.4	2.5	2.5	2.8	3.1	3.4	3.5	3.9	4.3	3.8	3.9	3.5	3.8	2.99	4.25
4-Oct	3.8	4.4	4.3	4.8	5.4	6.1	6.4	6.9	6.6	6.3	5.5	4.6	4.4	4.3	4.3	3.7	3.7	3.9	6.3	7.2	8.4	14.9	11.7	9.3	6.14	14.94
5-Oct	7.0	6.1	5.9	5.7	5.8	6.6	6.4	8.1	6.8	4.9	4.2	3.6	4.0	4.1	3.7	3.6	4.4	6.4	5.8	4.7	6.5	8.0	9.3	10.8	5.94	10.82
6-Oct	8.9	8.3	7.3	6.5	7.1	7.2	6.9	7.0	6.5	6.2	5.8	6.1	8.0	7.7	7.9	6.5	6.0	5.6	6.1	5.9	5.2	6.2	4.1	3.7	6.52	8.94
7-Oct	3.8	4.4	4.4	4.2	4.5	3.7	3.4	3.5	3.8	4.7	5.0	4.6	5.0	4.3	3.8	4.0	4.3	4.0	3.8	4.1	5.4	5.3	5.4	3.8	4.29	5.38
8-Oct	3.2	3.2	2.9	2.2	2.1	2.3	3.7	3.2	3.1	3.6	3.3	3.4	4.0	3.5	4.4	3.7	4.4	3.7	2.7	3.1	3.9	2.8	2.7	2.7	3.24	4.40
9-Oct	2.9	2.6	2.3	2.2	2.4	2.5	2.4	2.6	2.7	2.8	3.2	3.5	3.0	3.0	2.5	3.0	2.6	2.3	2.1	2.1	3.8	2.8	3.4	2.9	2.73	3.77
10-Oct	2.7	2.8	14.0	5.2	5.7	3.9	4.3	3.3	4.1	4.1	5.0	6.9	7.6	8.4	7.2	7.4	7.4	7.2	6.9	5.4	6.0	7.1	7.0	7.2	6.12	14.05
11-Oct	6.4	5.8	2.3	2.2	1.4	1.2	1.2	1.9	1.4	1.6	1.9	2.1	2.1	1.9	1.9	1.9	2.0	1.8	1.6	1.4	1.4	1.3	1.3	1.2	2.06	6.44
12-Oct	1.3	1.3	1.3	1.4	1.5	1.4	1.5	1.7	2.0	2.1	2.1	4.5	4.3	4.9	5.4	3.5	4.9	6.5	5.8	6.7	9.6	9.2	7.7	5.9	4.02	9.61
13-Oct	7.3	6.9	7.4	11.1	10.2	10.4	8.2	8.7	9.7	7.5	2.5	1.9	2.3	3.3	2.8	2.9	2.8	4.4	6.2	6.7	7.2	7.8	10.9	6.4	6.47	11.13
14-Oct	7.2	12.6	15.7	12.9	15.7	13.5	14.8	12.4	8.8	5.6	3.7	2.5	1.9	1.8	2.0	2.0	1.5	1.3	1.3	1.3	1.3	1.2	1.1	1.1	5.96	15.70
15-Oct	1.1	1.2	1.3	1.2	1.3	1.3	1.3	1.4	1.3	1.2	1.0	1.0	1.0	1.0	1.1	1.3	1.4	1.5	1.6	1.6	3.3	3.7	3.3	3.2	1.61	3.66
16-Oct	3.1	3.1	3.2	3.2	2.3	2.1	2.0	1.8	1.6	1.6	2.8	2.7	2.0	2.0	3.4	4.6	5.1	5.6	6.7	18.9	10.9	9.7	11.5	10.5	5.02	18.92
17-Oct	5.4	5.1	3.8	3.3	3.6	5.8	5.2	4.3	2.7	2.3	3.0	6.3	4.3	5.7	3.8	2.7	2.2	2.1	2.2	2.4	2.5	1.8	1.7	2.4	3.54	6.27
18-Oct	3.0	3.1	3.0	3.0	2.7	2.6	2.4	2.1	2.0	2.0	2.1	2.5	2.4	2.3	2.3	2.4	2.5	2.6	2.8	3.2	3.6	3.9	4.0	4.0	2.77	4.03
19-Oct	4.1	2.8	2.4	2.6	2.7	2.4	2.5	2.8	3.4	2.2	2.4	2.3	2.1	2.5	5.0	3.0	3.0	3.4	8.0	5.4	5.8	11.6	6.1	5.7	3.93	11.63
20-Oct	4.3	5.2	5.6	4.1	4.0	4.2	4.1	3.9	4.2	4.8	4.7	4.7	7.7	10.8	11.6	4.8	3.2	3.0	2.8	2.6	3.1	3.4	3.1	2.9	4.69	11.64
21-Oct	2.8	2.4	2.2	2.0	1.9	1.9	1.8	1.8	2.2	2.2	3.1	3.0	2.9	2.7	2.7	2.5	3.1	6.3	6.7	8.0	7.2	5.5	4.6	4.4	3.50	8.04
22-Oct	3.6	4.2	4.2	3.7	5.2	4.7	4.9	4.6	3.1	2.5	2.4	2.4	3.6	2.9	2.3	2.3	2.7	3.1	2.6	2.1	2.0	1.8	1.8	1.7	3.11	5.15
23-Oct	1.8	1.8	1.8	1.7	1.8	1.7	1.7	1.8	1.7	1.7	1.7	1.9	2.3	2.4	2.4	2.8	4.5	8.2	11.1	9.1	8.7	8.8	4.7	3.9	3.75	11.11
24-Oct	3.0	2.5	2.6	2.7	3.0	3.2	3.3	3.4	4.4	3.1	2.7	2.8	2.7	2.4	3.2	2.8	2.9	3.4	2.8	3.4	6.0	5.6	7.4	6.2	3.56	7.39
25-Oct	5.1	4.3	3.9	4.1	4.9	5.5	5.7	5.2	5.0	5.5	3.7	3.4	3.1	1.9	1.7	1.8	2.3	2.5	2.0	2.1	2.0	1.9	1.8	1.8	3.38	5.74
26-Oct	1.8	1.8	1.9	2.3	2.8	4.0	7.8	7.1	6.5	3.3	2.6	3.0	2.7	2.9	2.4	1.3	1.2	1.4	2.0	2.5	4.0	3.3	2.7	2.7	3.08	7.80
27-Oct	2.6	2.8	2.5	3.1	3.1	2.4	2.3	2.6	2.5	2.8	3.0	3.6	3.9	4.5	4.9	4.4	11.0	11.3	9.8	11.0	8.9	6.8	6.2	5.0	5.04	11.28
28-Oct	4.2	3.3	2.7	2.7	2.4	2.5	2.5	2.5	2.6	2.7	3.0	3.6	5.5	9.5	12.6	8.6	7.0	6.7	5.7	4.3	3.0	2.6	2.7	2.9	4.41	12.63
29-Oct	2.8	2.1	2.2	2.0	1.9	1.7	1.9	2.2	1.7	1.7	1.6	1.5	1.5	1.4	1.3	1.3	1.3	1.3	1.3	1.3	1.3	1.5	1.4	1.3	1.66	2.78
30-Oct	1.7	2.1	1.8	2.0	2.9	3.2	3.2	2.8	2.1	2.0	1.9	1.9	2.0	2.2	3.1	4.4	6.6	6.5	5.2	5.8	7.0	7.8	10.7	9.9	4.11	10.66
31-Oct	8.5	7.9	7.0	6.6	6.1	6.6	6.1	5.5	4.9	4.7	4.0	4.0	3.8	3.3	3.8	3.6	3.0	2.7	2.5	2.0	2.2	1.9	2.0	2.0	4.36	8.51
																								Diurnal Average		
																								Diurnal Maximum		
Alberta Ambient Air Quality Objectives (AAAQO): 1-hr 80 ul/m <sup>3</sup> 24-hr 30 ul/m <sup>3</sup>																										























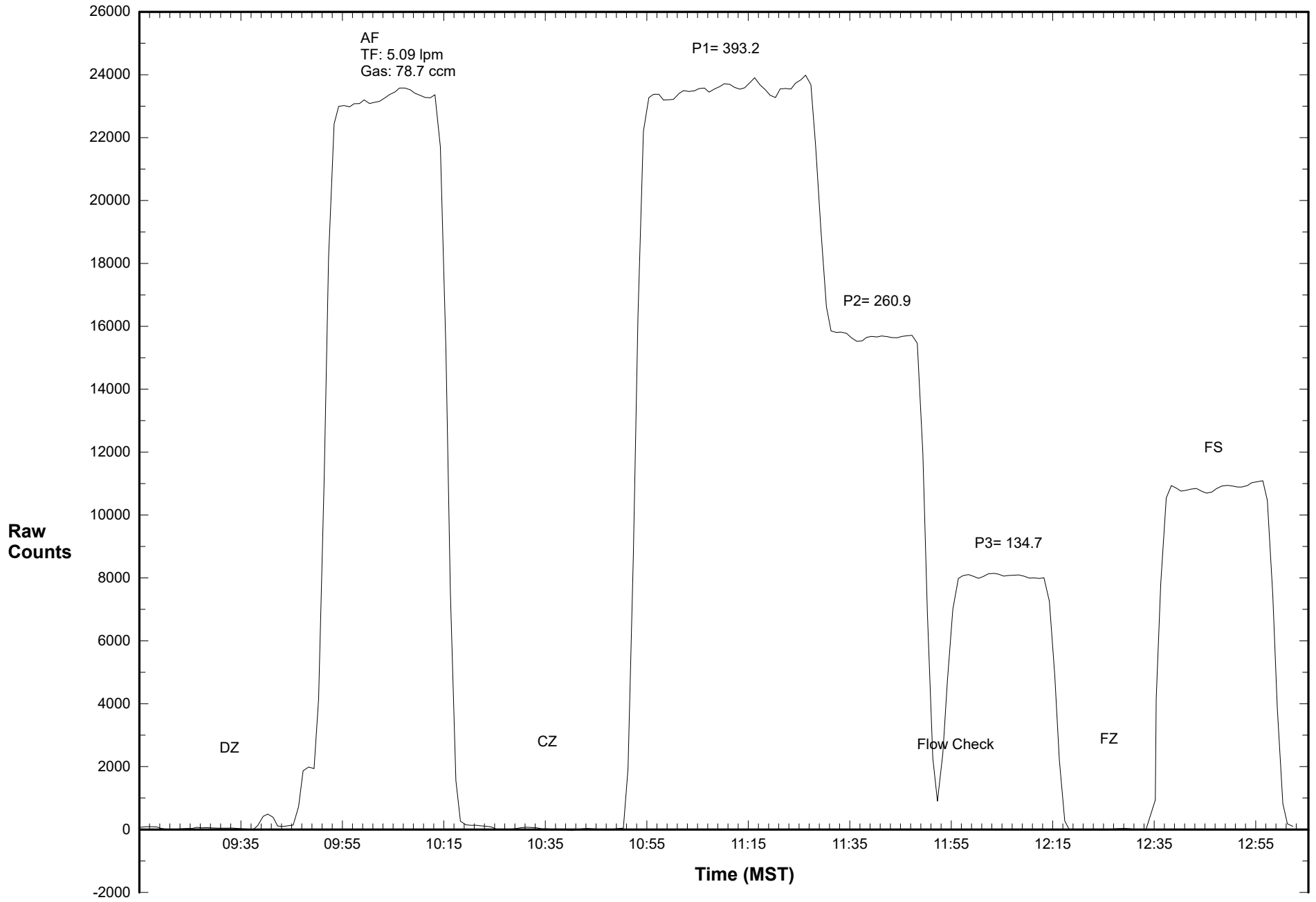








# Station 910 SO2 October 18, 2017: Calibration Graph



**WEST CENTRAL AIRSHED SOCIETY**

**CONTINUOUS AMBIENT AIR QUALITY  
MONITORING PROGRAM  
MONTHLY REPORT  
METEROLOGICAL DATA**

**AMS 910  
GENESEE  
OCTOBER 2017**

Operations and Data Collection by:  
West Central Airshed Society  
Drayton Valley, Alberta

QA/QC, Data Validation and Reporting by:  
West Central Airshed Society  
Drayton Valley, Alberta



**WCAS - Genesee**  
**Summary of Hourly Averages**

**External Temperature (ET) - C**  
**October 2017**

Maximum Value: 22.60 C on Oct 5 16:00      Maximum Daily Average: 12.76 C on Oct 28 Minimum Value: -6.8 C on Oct 30 07:00      Minimum Daily Average: -1.41 C on Oct 13 Maximum Diurnal Average: 9.96 C at hour 14      Minimum Diurnal Average: 1.33 C at hour 7 Monthly Average: 4.892 C      Percentiles: P <sub>1</sub> = -5.2 P <sub>10</sub> = -1.0 Q <sub>1</sub> = 1.2 Median = 4.2 Q <sub>3</sub> = 7.8 P <sub>90</sub> = 12.5 P <sub>99</sub> = 17.6																								Hours in Service: 744 Hours of Data: 744 Hours of Missing Data: 0 Hours of Calibration: 0 Percent Operational Time: 100.0																									
Day	Hourly Period Ending At																								Daily Average	Daily Maximum																							
	1	2	3	4	5	6	7	8	9	10	11	12	13	14	15	16	17	18	19	20	21	22	23	24																									
1-Oct	9.9	9.2	8.7	7.8	7.2	7.2	7.2	7.4	7.7	8.2	8.3	8.5	8.6	8.3	7.8	7.6	6.9	6.3	5.5	5.0	4.1	2.6	1.7	1.4	6.80	9.92																							
2-Oct	1.3	1.0	0.8	0.7	0.6	0.4	0.3	0.1	-0.1	-0.3	0.0	0.4	1.2	2.2	3.2	4.2	4.0	3.7	2.6	0.7	-0.5	-0.6	-0.5	-1.2	1.01	4.15																							
3-Oct	-1.7	-1.9	-2.1	-2.0	-2.2	-4.3	-5.4	-3.9	-1.1	2.1	5.1	7.2	8.5	9.2	9.9	10.0	8.3	4.9	2.7	1.7	1.4	2.5	2.2	2.5	2.24	10.00																							
4-Oct	2.3	5.1	4.8	4.9	4.1	2.4	0.8	1.6	5.5	9.3	11.4	13.6	15.0	15.4	15.9	16.1	16.0	14.3	11.2	10.6	8.1	5.9	5.0	4.1	8.48	16.13																							
5-Oct	3.5	4.0	3.9	4.2	3.6	2.6	2.5	2.2	6.9	11.3	15.1	18.0	20.3	21.6	22.5	22.6	21.3	18.0	13.9	12.2	11.0	10.5	10.0	9.8	11.31	22.60																							
6-Oct	9.8	8.6	10.4	11.7	6.1	6.3	5.6	7.1	8.3	9.6	10.7	13.7	15.4	15.7	15.1	15.3	14.5	12.3	9.3	8.2	8.7	9.8	7.6	6.3	10.26	15.73																							
7-Oct	7.1	6.9	6.4	5.4	3.0	2.5	4.0	5.1	6.3	6.2	4.6	3.0	3.9	7.7	9.0	9.6	9.2	8.0	7.1	6.2	6.7	6.5	6.0	3.9	6.02	9.64																							
8-Oct	3.7	3.4	2.6	1.3	0.4	0.5	0.1	0.4	1.2	1.8	2.3	3.5	4.9	5.6	6.3	7.1	7.0	5.1	2.4	0.8	0.0	-0.1	-1.5	-0.5	2.43	7.06																							
9-Oct	-0.4	0.3	0.2	-0.1	1.4	2.5	3.2	4.1	5.5	7.3	9.8	12.2	14.3	15.7	15.5	13.9	12.3	10.4	7.2	5.5	4.0	4.5	3.6	2.9	6.50	15.68																							
10-Oct	2.8	3.4	1.6	1.9	1.0	1.7	0.5	1.7	2.9	4.5	5.3	6.1	7.0	7.4	7.6	7.6	7.0	6.3	6.0	5.5	4.7	4.3	3.4	3.0	4.30	7.64																							
11-Oct	3.3	3.4	1.7	1.2	1.1	1.1	0.9	0.7	1.1	1.5	1.6	1.9	2.6	3.0	2.4	1.9	1.3	0.7	0.0	0.0	-0.4	-0.6	-0.7	-0.6	1.21	3.41																							
12-Oct	-1.0	-0.7	-1.0	-1.1	-1.0	-1.0	-1.5	-1.3	-0.4	0.2	0.8	1.1	1.7	1.8	1.8	2.2	1.9	1.5	1.0	0.9	0.9	-0.2	-0.8	-1.8	0.16	2.18																							
13-Oct	-1.8	-3.6	-3.3	-3.0	-5.0	-4.8	-3.8	-4.2	-2.8	-0.5	1.2	2.1	2.6	2.9	2.8	2.5	2.1	-0.3	-1.2	-2.2	-2.7	-3.4	-3.7	-3.6	-1.41	2.93																							
14-Oct	-4.1	-3.8	-4.7	-5.5	-5.2	-4.4	-2.4	-1.6	-0.7	0.4	1.7	3.5	5.6	6.7	7.0	7.0	6.3	5.4	4.1	3.7	4.3	4.9	5.1	5.6	1.62	6.98																							
15-Oct	5.0	3.8	2.7	1.2	0.9	-0.7	-0.7	1.4	4.1	8.9	11.1	13.0	15.9	16.9	17.6	17.0	14.4	11.9	11.3	11.1	8.8	6.9	5.9	5.5	8.07	17.57																							
16-Oct	4.1	4.1	4.4	5.1	5.8	5.4	5.6	6.5	7.9	9.5	11.1	12.6	14.2	13.4	12.7	12.3	12.0	10.6	8.6	6.5	5.4	3.9	2.2	1.8	7.74	14.16																							
17-Oct	2.4	2.7	4.8	4.6	4.2	4.2	4.7	4.5	6.6	10.2	16.1	18.3	19.3	17.7	9.5	5.3	5.2	6.4	5.2	4.6	4.1	3.4	2.4	2.7	7.04	19.33																							
18-Oct	2.8	2.5	1.2	0.6	-1.3	-1.8	-2.0	-2.9	0.3	2.3	4.7	7.2	8.6	8.6	8.4	8.2	7.8	7.1	6.3	4.8	4.0	2.6	1.9	1.3	3.47	8.60																							
19-Oct	1.6	2.8	5.3	3.4	3.9	4.2	1.3	0.4	1.4	7.2	8.1	11.8	13.7	14.7	14.7	14.5	13.3	12.0	10.7	9.3	7.4	5.5	3.9	4.8	7.33	14.66																							
20-Oct	5.7	1.5	2.5	1.1	0.2	2.3	3.6	2.8	4.1	5.4	6.9	9.2	10.2	10.6	9.9	9.6	9.2	8.5	7.8	7.0	6.6	5.3	3.7	2.4	5.68	10.57																							
21-Oct	-0.5	0.1	-0.8	-2.2	-2.7	-2.3	-3.6	-2.7	0.6	2.7	4.5	6.2	7.8	9.1	10.0	9.7	8.9	6.4	5.2	2.4	1.5	0.2	-0.2	-1.1	2.47	9.97																							
22-Oct	-0.8	-1.0	-1.4	-0.9	-1.1	-1.0	-2.1	-1.6	0.6	3.3	6.2	8.1	9.2	10.2	10.2	10.8	11.1	8.2	7.0	7.1	6.6	5.8	5.3	5.0	4.37	11.13																							
23-Oct	3.0	3.5	3.0	4.4	5.2	4.1	3.6	3.4	4.6	6.7	8.7	10.3	11.5	13.0	13.5	13.0	11.6	8.2	6.2	6.1	5.1	3.5	4.5	4.2	6.71	13.48																							
24-Oct	5.4	8.6	8.9	9.3	7.6	7.6	8.6	8.3	10.4	14.2	17.4	17.9	17.4	16.3	15.1	14.6	13.0	10.6	8.9	8.2	7.3	6.4	5.3	5.5	10.54	17.92																							
25-Oct	5.6	4.9	4.0	3.3	3.2	3.8	4.1	4.4	4.0	4.3	5.5	6.5	4.7	2.6	1.7	1.5	1.2	0.9	0.5	-0.4	-0.9	-1.0	-2.6	-2.2	2.48	6.46																							
26-Oct	-1.9	-1.7	-2.0	-3.2	-5.3	-5.3	-4.7	-3.5	-1.6	-0.4	0.9	3.0	4.5	5.7	5.9	6.3	5.1	2.8	0.6	0.4	-0.1	0.2	0.9	0.0	0.27	6.29																							
27-Oct	1.3	2.2	2.3	1.7	1.3	1.7	-0.5	-0.5	1.6	5.5	8.5	11.6	13.9	14.0	13.8	14.7	11.5	9.6	7.8	6.5	6.8	6.1	4.7	5.2	6.31	14.73																							
28-Oct	6.4	7.8	14.4	13.7	14.7	15.3	14.6	15.1	16.4	16.7	16.5	17.8	18.5	17.1	15.9	14.0	11.4	11.0	9.9	8.2	8.1	7.9	7.6	7.0	12.76	18.46																							
29-Oct	5.6	4.4	3.3	2.7	2.5	2.5	2.8	2.7	3.1	4.0	4.5	5.3	5.6	5.4	4.9	4.1	3.6	3.3	2.7	2.2	1.2	0.7	-0.7	-2.2	3.09	5.61																							
30-Oct	-3.4	-4.5	-5.1	-5.0	-6.4	-6.7	-6.8	-5.1	-2.5	-0.4	1.2	3.0	5.1	5.7	5.7	6.1	5.9	5.2	4.7	4.1	2.9	2.4	2.2	2.3	0.44	6.13																							
31-Oct	0.8	0.0	0.9	1.4	1.5	0.6	0.7	0.7	0.7	1.2	2.4	2.6	3.6	4.4	5.2	5.6	5.0	4.9	4.2	1.1	1.1	0.4	-0.4	-0.7	1.98	5.57																							
																								2.51	2.49	2.54	2.21	1.59	1.50	1.33	1.72	3.31	5.25	6.84	8.36	9.52	9.96	9.73	9.51	8.65	7.22	5.80	4.77	4.08	3.45	2.71	2.36	Diurnal Average	
																								9.92	9.23	14.40	13.75	14.68	15.32	14.59	15.13	16.38	16.69	17.40	18.32	20.28	21.61	22.47	22.60	21.26	17.99	13.95	12.16	11.03	10.48	9.98	9.78	Diurnal Maximum	



**WCAS - Genesee**  
**Summary of Hourly Averages**

**External Temperature 10 m (ET\_10) - C**  
**October 2017**

Maximum Value: 21.75 C on Oct 5 16:00		Maximum Daily Average: 13.04 C on Oct 28		Hours in Service: 744																							
Minimum Value: -4.7 C on Oct 26 07:00		Minimum Daily Average: -0.99 C on Oct 13		Hours of Data: 744																							
Maximum Diurnal Average: 8.89 C at hour 14		Minimum Diurnal Average: 2.21 C at hour 7		Hours of Missing Data: 0																							
Monthly Average: 5.180 C		Percentiles: P <sub>1</sub> = -4.0 P <sub>10</sub> = -1.0 Q <sub>1</sub> = 1.2 Median = 4.8 Q <sub>3</sub> = 8.1 P <sub>90</sub> = 12.7 P <sub>99</sub> = 18.2		Hours of Calibration: 0																							
				Percent Operational Time: 100.0																							
Day	Hourly Period Ending At																								Daily Average	Daily Maximum	
	1	2	3	4	5	6	7	8	9	10	11	12	13	14	15	16	17	18	19	20	21	22	23	24			
1-Oct	9.8	9.1	8.6	7.6	7.1	7.0	6.9	6.9	7.2	7.5	7.4	7.6	7.7	7.5	7.0	6.8	6.3	5.8	5.0	4.6	3.7	2.2	1.2	0.9	6.30	9.78	
2-Oct	0.8	0.6	0.4	0.3	0.3	0.2	0.1	-0.2	-0.4	-0.7	-0.6	-0.2	0.6	1.6	2.5	3.3	3.5	3.5	2.8	1.6	0.8	0.4	0.3	-0.5	0.88	3.53	
3-Oct	-1.0	-1.6	-1.8	-1.9	-2.0	-3.3	-4.5	-4.4	-2.5	-0.1	2.6	4.2	5.8	7.0	8.2	8.9	8.3	7.3	6.3	5.4	4.4	3.7	3.6	3.1	2.32	8.88	
4-Oct	3.5	5.8	5.2	5.1	4.6	3.4	2.1	2.0	4.3	7.2	9.5	11.3	12.9	13.8	14.6	15.0	15.1	14.6	13.3	12.0	10.0	8.9	8.3	7.4	8.75	15.10	
5-Oct	7.3	7.2	6.7	6.4	5.5	5.2	4.9	2.9	5.7	9.4	13.1	15.9	18.4	20.2	21.3	21.7	21.1	19.4	17.3	15.9	14.8	14.0	13.2	12.6	12.51	21.75	
6-Oct	11.4	9.9	11.4	12.2	9.1	8.1	7.9	8.2	8.4	9.3	10.3	13.0	15.2	15.0	14.4	14.8	14.3	13.2	11.4	10.4	10.1	9.9	7.8	6.9	10.95	15.22	
7-Oct	7.3	7.1	6.6	5.7	3.7	3.2	4.1	4.9	5.8	5.8	3.5	2.4	3.7	7.9	8.5	8.9	8.7	8.4	7.6	6.6	6.5	6.2	5.6	3.6	5.93	8.91	
8-Oct	3.5	3.0	2.3	1.1	0.2	0.1	-0.3	0.0	0.6	1.1	1.5	2.3	3.3	4.1	5.0	6.0	6.3	5.7	4.6	3.8	2.6	1.7	0.8	1.3	2.53	6.25	
9-Oct	1.2	1.3	1.2	1.2	1.8	2.5	3.2	4.0	4.9	6.2	8.5	11.2	13.1	14.3	14.6	13.5	12.1	10.6	8.7	7.7	5.8	5.7	5.4	5.8	6.85	14.62	
10-Oct	4.1	5.6	3.4	3.3	3.8	4.7	2.7	3.5	3.1	3.7	4.5	5.3	6.3	6.7	7.0	7.0	6.5	6.1	5.9	5.2	4.3	3.8	3.2	2.7	4.69	7.00	
11-Oct	3.0	3.0	1.0	0.6	0.6	0.5	0.3	0.2	0.5	0.6	0.6	0.7	1.3	1.6	1.3	1.0	0.6	0.1	-0.5	-0.5	-0.9	-1.0	-1.1	-1.0	0.52	2.97	
12-Oct	-1.3	-1.2	-1.4	-1.5	-1.4	-1.5	-1.5	-1.5	-1.2	-0.8	-0.2	0.1	0.6	0.9	1.0	1.4	1.3	1.0	1.0	0.8	0.6	0.0	-0.3	-0.6	-0.23	1.39	
13-Oct	-1.0	-1.8	-2.4	-2.2	-3.3	-3.1	-2.5	-3.7	-3.5	-1.3	0.3	1.1	1.4	1.7	1.8	1.7	1.5	0.5	-0.3	-1.0	-1.8	-2.2	-1.8	-1.9	-0.99	1.78	
14-Oct	-2.3	-2.2	-2.9	-4.0	-3.6	-3.9	-2.3	-1.8	-1.0	-0.2	0.9	2.5	4.2	5.5	6.2	6.5	6.2	5.6	5.1	4.5	5.3	5.4	5.3	5.7	1.86	6.46	
15-Oct	5.4	4.9	4.3	2.5	1.5	0.7	0.2	1.9	3.9	7.3	9.8	11.2	13.9	15.5	16.4	16.6	15.3	13.9	13.1	12.8	10.5	9.3	8.0	7.6	8.60	16.63	
16-Oct	6.5	6.1	6.7	6.6	7.0	9.2	8.8	8.3	8.0	8.7	10.0	11.2	12.0	12.3	12.3	12.1	11.7	10.8	9.8	9.0	8.1	8.0	5.1	5.5	8.91	12.33	
17-Oct	5.7	5.3	5.8	5.9	5.7	5.0	5.6	6.5	8.6	10.8	14.6	17.5	18.6	17.3	8.5	4.7	5.7	6.2	4.9	4.4	4.0	3.4	2.4	2.7	7.50	18.65	
18-Oct	2.8	2.5	1.5	1.0	-0.4	-0.5	-0.8	-1.1	-0.5	0.9	2.9	5.4	6.5	7.1	7.5	7.8	7.8	7.5	6.8	5.9	5.3	4.2	4.6	4.7	3.73	7.82	
19-Oct	4.7	6.0	6.6	5.1	6.0	6.1	3.3	2.7	2.4	5.8	6.7	10.1	12.1	13.2	13.6	14.0	13.7	13.2	12.4	11.0	9.6	8.5	6.4	7.7	8.37	14.04	
20-Oct	8.7	3.8	4.8	3.9	2.6	3.2	3.7	2.9	3.8	4.8	6.1	7.9	8.9	9.5	9.2	9.1	8.7	8.2	7.7	6.8	6.5	5.6	4.3	3.2	6.00	9.48	
21-Oct	0.9	1.5	1.3	-0.5	-1.1	-1.0	-1.5	-1.1	0.4	1.6	3.4	5.0	6.7	7.8	8.1	8.4	8.5	7.1	5.8	4.2	3.2	2.1	1.7	1.2	3.07	8.51	
22-Oct	0.8	0.0	-1.3	-0.8	-1.0	-1.2	-1.2	-1.2	-0.1	2.4	5.1	6.7	8.1	9.2	9.5	10.2	10.9	9.0	8.0	7.7	7.1	6.4	6.0	5.8	4.43	10.90	
23-Oct	4.8	5.0	3.8	5.5	5.7	4.9	4.3	4.1	4.2	5.9	7.8	9.1	10.2	11.9	12.6	12.3	11.8	10.8	8.9	7.8	6.9	5.7	6.1	6.4	7.35	12.56	
24-Oct	7.3	9.2	9.6	10.1	9.4	9.8	10.6	10.4	11.4	14.0	16.5	16.7	16.4	15.4	14.4	13.8	12.7	11.4	10.6	9.4	7.6	6.6	6.2	5.9	11.06	16.73	
25-Oct	6.0	5.1	4.0	3.5	3.1	3.4	3.8	4.0	3.7	3.9	5.2	6.1	3.8	1.5	1.1	0.9	0.7	0.4	0.1	-0.9	-1.2	-1.3	-1.9	-2.1	2.21	6.08	
26-Oct	-2.0	-1.9	-2.1	-2.7	-3.6	-4.4	-4.7	-3.5	-2.0	-1.1	-0.1	1.5	2.7	3.6	4.3	5.2	4.9	4.2	3.1	2.2	1.5	1.6	1.4	1.1	0.37	5.20	
27-Oct	1.7	2.2	2.6	2.1	2.3	2.4	1.6	0.7	1.2	4.5	7.3	9.9	11.9	13.0	13.2	13.9	13.4	12.2	10.9	9.6	9.7	9.0	8.7	9.6	7.23	13.90	
28-Oct	9.7	10.8	14.8	14.6	15.3	15.8	15.2	15.5	16.5	16.5	16.1	16.9	17.7	16.6	15.6	13.8	11.8	11.2	10.1	8.4	8.0	7.7	7.4	6.8	13.04	17.71	
29-Oct	5.6	4.4	3.3	2.6	2.4	2.5	2.8	2.7	2.9	3.5	3.7	4.3	4.5	4.5	4.2	3.4	3.2	3.0	2.5	2.0	1.1	0.9	0.7	-0.3	2.92	5.59	
30-Oct	-1.8	-2.4	-3.1	-3.5	-4.0	-4.3	-4.3	-3.5	-2.5	-0.8	0.4	1.8	3.7	4.8	4.9	5.6	5.6	5.1	4.7	4.3	3.7	3.4	3.2	3.1	1.00	5.64	
31-Oct	2.4	1.1	0.9	1.2	1.1	-0.1	-0.1	0.0	0.0	0.7	2.3	2.6	4.1	4.9	5.4	5.4	4.8	4.6	4.0	0.7	1.2	0.6	-0.7	-1.0	1.92	5.38	
		3.73	3.52	3.28	2.93	2.53	2.40	2.21	2.27	3.03	4.42	5.81	7.14	8.27	8.89	8.85	8.84	8.49	7.76	6.84	5.87	5.13	4.53	3.91	3.67	Diurnal Average	
		11.41	10.80	14.80	14.60	15.25	15.81	15.15	15.51	16.53	16.47	16.49	17.53	18.65	20.18	21.35	21.75	21.12	19.37	17.27	15.86	14.82	13.96	13.20	12.63	Diurnal Maximum	



**WCAS - Genesee**  
**Summary of Hourly Averages**

**Delta Temperature (ET\_D) - C**  
**October 2017**

<b>Maximum Value: 4.34 C on Oct 28 00:00</b>																				<b>Maximum Daily Average: 1.20 C on Oct 5</b>					<b>Hours in Service: 744</b>																								
<b>Minimum Value: -3.0 C on Oct 3 12:00</b>																				<b>Minimum Daily Average: -0.67 C on Oct 11</b>					<b>Hours of Data: 744</b>																								
<b>Maximum Diurnal Average: 1.30 C at hour 24</b>																				<b>Minimum Diurnal Average: -1.24 C at hour 13</b>					<b>Hours of Missing Data: 0</b>																								
<b>Monthly Average: 0.289 C</b>																				<b>Percentiles: P<sub>1</sub> = -2.1 P<sub>10</sub> = -1.1 Q<sub>1</sub> = -0.6 Median = 0.0 Q<sub>3</sub> = 1.2 P<sub>90</sub> = 2.2 P<sub>99</sub> = 3.7</b>					<b>Hours of Calibration: 0</b>																								
																				<b>Percent Operational Time: 100.0</b>																													
Day	Hourly Period Ending At																								Daily Average	Daily Maximum																							
	1	2	3	4	5	6	7	8	9	10	11	12	13	14	15	16	17	18	19	20	21	22	23	24																									
1-Oct	-0.1	-0.1	-0.1	-0.2	-0.1	-0.2	-0.3	-0.4	-0.6	-0.7	-0.9	-0.9	-0.9	-0.8	-0.8	-0.8	-0.5	-0.5	-0.5	-0.4	-0.4	-0.4	-0.4	-0.5	-0.48	-0.11																							
2-Oct	-0.5	-0.4	-0.4	-0.4	-0.2	-0.2	-0.2	-0.3	-0.3	-0.4	-0.5	-0.6	-0.5	-0.6	-0.7	-0.8	-0.5	-0.2	0.2	0.9	1.3	1.0	0.8	0.7	-0.12	1.31																							
3-Oct	0.7	0.3	0.3	0.1	0.2	1.0	0.9	-0.5	-1.4	-2.2	-2.5	-3.0	-2.7	-2.2	-1.7	-1.1	0.0	2.4	3.6	3.6	2.9	1.3	1.3	0.5	0.08	3.62																							
4-Oct	1.2	0.7	0.3	0.2	0.5	0.9	1.3	0.3	-1.2	-2.1	-1.9	-2.2	-2.1	-1.6	-1.3	-1.1	-0.9	0.3	2.1	1.4	1.8	3.0	3.2	3.3	0.26	3.28																							
5-Oct	3.8	3.2	2.8	2.2	1.9	2.6	2.4	0.6	-1.2	-1.9	-2.0	-2.1	-1.8	-1.4	-1.1	-0.8	-0.1	1.4	3.3	3.7	3.8	3.5	3.2	2.8	1.20	3.80																							
6-Oct	1.6	1.4	1.0	0.4	3.0	1.8	2.3	1.1	0.1	-0.3	-0.3	-0.7	-0.2	-0.7	-0.6	-0.5	-0.2	0.9	2.1	2.2	1.4	0.1	0.2	0.6	0.69	3.04																							
7-Oct	0.2	0.1	0.2	0.2	0.6	0.6	0.1	-0.2	-0.5	-0.4	-1.1	-0.6	-0.2	0.2	-0.5	-0.7	-0.4	0.4	0.6	0.4	-0.1	-0.3	-0.3	-0.2	-0.09	0.64																							
8-Oct	-0.2	-0.4	-0.3	-0.2	-0.2	-0.4	-0.3	-0.4	-0.6	-0.6	-0.7	-1.2	-1.6	-1.4	-1.3	-1.0	-0.7	0.6	2.2	2.9	2.5	1.8	2.3	1.8	0.11	2.92																							
9-Oct	1.5	0.9	1.0	1.3	0.4	0.0	0.0	-0.1	-0.6	-1.1	-1.2	-1.0	-1.3	-1.4	-0.9	-0.3	-0.2	0.2	1.5	2.1	1.7	1.2	1.7	2.9	0.35	2.91																							
10-Oct	1.2	2.2	1.8	1.3	2.8	3.0	2.2	1.8	0.2	-0.7	-0.8	-0.8	-0.7	-0.6	-0.6	-0.6	-0.5	-0.2	-0.1	-0.3	-0.4	-0.4	-0.3	-0.2	0.39	2.98																							
11-Oct	-0.4	-0.4	-0.7	-0.5	-0.5	-0.5	-0.5	-0.5	-0.6	-0.8	-1.0	-1.2	-1.3	-1.4	-1.1	-0.9	-0.7	-0.6	-0.5	-0.5	-0.5	-0.3	-0.3	-0.4	-0.67	-0.31																							
12-Oct	-0.3	-0.4	-0.3	-0.4	-0.4	-0.4	0.0	-0.2	-0.8	-0.9	-1.0	-0.9	-1.1	-0.9	-0.8	-0.8	-0.6	-0.4	-0.1	-0.1	-0.2	0.2	0.5	1.2	-0.38	1.17																							
13-Oct	0.8	1.7	0.9	0.8	1.7	1.7	1.2	0.5	-0.7	-0.7	-0.8	-1.0	-1.1	-1.2	-1.0	-0.8	-0.6	0.8	0.9	1.2	0.9	1.2	1.9	1.7	0.41	1.94																							
14-Oct	1.8	1.6	1.7	1.5	1.6	0.5	0.0	-0.2	-0.3	-0.5	-0.8	-1.0	-1.3	-1.2	-0.8	-0.5	-0.1	0.2	1.0	0.8	1.0	0.5	0.2	0.1	0.24	1.83																							
15-Oct	0.4	1.1	1.6	1.2	0.6	1.4	0.9	0.5	-0.2	-1.6	-1.3	-1.7	-2.0	-1.4	-1.2	-0.4	0.9	2.0	1.8	1.6	1.8	2.4	2.2	2.1	0.53	2.36																							
16-Oct	2.4	1.9	2.3	1.5	1.2	3.7	3.1	1.8	0.2	-0.7	-1.0	-1.4	-2.1	-1.1	-0.4	-0.2	-0.3	0.1	1.2	2.5	2.7	4.1	2.8	3.7	1.17	4.05																							
17-Oct	3.2	2.6	0.9	1.3	1.5	0.8	0.9	2.0	2.1	0.6	-1.4	-0.8	-0.7	-0.4	-1.0	-0.6	0.5	-0.2	-0.2	-0.2	-0.1	-0.1	0.0	0.0	0.45	3.22																							
18-Oct	0.0	0.0	0.3	0.3	1.0	1.2	1.2	1.8	-0.8	-1.4	-1.7	-1.8	-2.1	-1.5	-0.9	-0.3	0.0	0.3	0.5	1.1	1.2	1.6	2.7	3.3	0.25	3.32																							
19-Oct	3.1	3.1	1.3	1.7	2.0	1.9	2.0	2.3	1.0	-1.3	-1.4	-1.7	-1.6	-1.5	-1.0	-0.4	0.4	1.1	1.6	1.7	2.2	3.0	2.4	2.9	1.04	3.09																							
20-Oct	3.0	2.2	2.3	2.7	2.3	0.8	0.1	0.1	-0.2	-0.5	-0.8	-1.3	-1.3	-1.1	-0.7	-0.5	-0.4	-0.2	-0.1	-0.2	-0.1	0.2	0.6	0.8	0.32	2.98																							
21-Oct	1.4	1.3	2.0	1.7	1.6	1.3	2.1	1.6	-0.2	-1.1	-1.0	-1.1	-1.1	-1.3	-1.8	-1.2	-0.4	0.7	0.6	1.7	1.7	1.9	1.9	2.3	0.60	2.27																							
22-Oct	1.7	1.0	0.1	0.1	0.1	-0.2	0.9	0.4	-0.6	-0.9	-1.2	-1.3	-1.0	-1.0	-0.7	-0.6	-0.2	0.8	0.9	0.7	0.5	0.6	0.7	0.8	0.06	1.68																							
23-Oct	1.7	1.5	0.8	1.0	0.4	0.7	0.7	0.6	-0.4	-0.8	-0.9	-1.2	-1.2	-1.1	-0.9	-0.7	0.2	2.6	2.7	1.6	1.7	2.2	1.6	2.2	0.63	2.66																							
24-Oct	1.9	0.6	0.6	0.8	1.8	2.1	2.0	2.1	1.0	-0.2	-0.9	-1.2	-1.0	-0.9	-0.7	-0.8	-0.2	0.7	1.7	1.2	0.3	0.2	0.8	0.4	0.51	2.14																							
25-Oct	0.5	0.1	0.0	0.2	-0.1	-0.3	-0.3	-0.3	-0.3	-0.5	-0.3	-0.4	-0.9	-1.0	-0.6	-0.6	-0.5	-0.4	-0.4	-0.4	-0.3	-0.3	0.7	0.1	-0.26	0.74																							
26-Oct	0.0	-0.2	-0.2	0.4	1.7	0.9	0.0	0.0	-0.3	-0.7	-1.0	-1.5	-1.8	-2.1	-1.6	-1.1	-0.3	1.4	2.4	1.8	1.6	1.4	0.5	1.0	0.10	2.41																							
27-Oct	0.5	0.0	0.2	0.4	1.0	0.8	2.1	1.2	-0.3	-1.0	-1.2	-1.7	-2.0	-1.0	-0.7	-0.8	1.8	2.6	3.1	3.0	2.9	2.9	4.0	4.3	0.92	4.34																							
28-Oct	3.3	3.0	0.4	0.8	0.6	0.5	0.5	0.4	0.1	-0.2	-0.4	-0.9	-0.7	-0.5	-0.3	-0.2	0.4	0.2	0.2	0.2	-0.1	-0.2	-0.2	-0.2	0.28	3.26																							
29-Oct	0.0	0.0	-0.1	0.0	0.0	0.0	-0.1	0.0	-0.2	-0.5	-0.8	-1.0	-1.0	-0.9	-0.7	-0.6	-0.4	-0.3	-0.2	-0.2	0.0	0.2	1.4	1.9	-0.15	1.91																							
30-Oct	1.6	2.1	2.0	1.4	2.3	2.4	2.5	1.6	0.0	-0.4	-0.8	-1.2	-1.4	-0.9	-0.7	-0.5	-0.3	-0.1	0.1	0.2	0.8	0.9	1.0	0.8	0.56	2.51																							
31-Oct	1.6	1.2	0.0	-0.2	-0.3	-0.6	-0.7	-0.7	-0.6	-0.4	-0.1	0.0	0.5	0.5	0.2	-0.2	-0.2	-0.2	-0.2	-0.4	0.1	0.2	-0.3	-0.3	-0.05	1.61																							
																								1.20	1.03	0.73	0.71	0.93	0.90	0.87	0.55	-0.27	-0.82	-1.01	-1.21	-1.24	-1.05	-0.86	-0.66	-0.16	0.54	1.03	1.09	1.05	1.07	1.19	1.30	Diurnal Average	
																								3.80	3.19	2.79	2.75	3.04	3.73	3.11	2.28	2.07	0.57	-0.06	-0.02	0.49	0.46	0.15	-0.19	1.84	2.64	3.60	3.68	3.77	4.05	3.96	4.34	Diurnal Maximum	





**WCAS - Genesee**  
**Summary of Hourly Averages**

**Wind Speed (WS) - kph**  
**October 2017**

Day	Hourly Period Ending At (MST)																								Daily Average	Daily Maximum	
	1	2	3	4	5	6	7	8	9	10	11	12	13	14	15	16	17	18	19	20	21	22	23	24			
23 Spd	13.1	11.2	11.8	12.0	13.7	15.9	14.8	13.7	11.7	13.1	15.3	14.9	19.3	20.0	22.4	13.2	4.6	5.9	6.0	7.5	7.8	8.4	11.8	11.4	9.82	22.37	
Dir	WSW	WSW	WSW	WSW	W	W	W	W	WSW	W	W	W	W	WNW	WNW	NW	N	ESE	SSE	SSE	S	SSW	SW	SSW	WSW	WNW	
24 Spd	14.2	18.9	18.2	19.4	14.4	12.9	13.7	14.0	10.9	16.6	21.0	26.0	33.1	35.5	29.7	24.9	16.5	10.3	9.1	7.4	8.7	7.1	7.7	12.7	9.46	35.54	
Dir	SSW	SW	SW	SW	SW	SW	WSW	WSW	WSW	WSW	W	NW	NW	NW	NW	NW	NW	NW	NW	NE	ENE	ENE	ESE	ESE	W	NW	
25 Spd	15.1	11.6	9.8	7.4	9.5	9.8	8.4	6.4	13.6	15.6	21.8	39.3	54.6	42.0	39.5	33.2	30.8	29.6	24.3	20.5	15.2	10.1	9.7	8.6	16.03	54.61	
Dir	ESE	E	E	ENE	N	NNW	NW	WNW	NW	WSW	W	NW	NW	NNW	NNW	NNW	NNW	NNW	N	N	NNW	N	NNW	NNW	NNW	NNW	NW
26 Spd	3.1	3.5	5.7	7.0	7.5	11.9	10.2	9.9	16.5	20.8	17.5	18.1	17.0	17.6	12.7	8.7	7.3	9.4	8.9	13.0	13.4	15.1	14.1	8.9	9.05	20.80	
Dir	N	SSW	S	SSE	SSE	SSE	SE	SSE	S	S	SSE	S	SSW	SW	SW	W	WSW	WSW	SW	WSW	WSW	WSW	WSW	WSW	SSW	S	
27 Spd	13.4	12.2	5.1	8.0	12.9	14.7	11.3	17.7	14.9	7.7	9.8	12.8	12.6	10.7	8.0	3.6	6.2	6.9	8.3	10.1	13.1	13.7	15.4	14.8	9.43	17.72	
Dir	WSW	WSW	WSW	SW	WSW	WSW	SW	WSW	WSW	WSW	SW	WSW	SW	W	WNW	SSW	SE	SE	SSE	S	SW	SW	SW	SW	SW	SW	WSW
28 Spd	11.7	15.0	20.8	19.0	19.6	21.3	21.1	21.3	19.9	14.9	11.9	19.6	38.3	28.6	28.3	21.0	17.6	20.8	22.2	25.7	30.0	32.8	34.8	38.2	20.01	38.28	
Dir	SW	WSW	W	W	W	W	WSW	WSW	W	W	WNW	NW	NW	NW	NW	N	NNW	NW	NW	NW	NW	NW	NW	NW	WNW	NW	
29 Spd	35.5	37.5	36.5	31.0	28.1	34.3	37.2	31.5	33.9	40.0	39.2	38.5	37.7	35.1	32.4	26.3	24.1	20.7	18.8	15.1	13.1	9.9	6.4	5.3	26.91	40.01	
Dir	NW	NW	NW	NW	NW	NW	NW	NW	NW	NW	NNW	NW	NNW	NNW	NNW	N	NNW	NNW	NNW	N	N	NNW	NW	WSW	NW	NW	
30 Spd	11.3	11.9	11.4	12.2	10.2	10.2	11.2	13.9	13.6	15.9	11.7	14.1	15.1	14.7	14.1	20.7	25.1	15.5	15.6	17.3	14.8	12.5	10.7	9.1	11.67	25.05	
Dir	WSW	SW	SW	WSW	SW	SW	SW	SW	SW	SW	SSW	SW	SW	W	W	WNW	NW	WNW	WNW	NW	WNW	WNW	WNW	W	W	NW	
31 Spd	7.8	10.3	12.4	11.5	10.5	7.7	7.2	7.3	10.2	8.7	14.5	17.0	24.5	21.9	28.9	29.3	30.6	25.0	17.7	23.3	25.6	33.9	29.9	27.7	14.50	33.89	
Dir	WSW	SW	WSW	WSW	WSW	SSW	SSE	SSE	S	SW	W	WNW	WNW	WNW	WNW	WNW	WNW	WNW	WNW	WNW	NNW	NW	NNW	NNW	NNW	NNW	NNW
Spd	9.56	9.80	9.95	9.45	8.94	9.51	9.19	9.22	9.70	10.54	10.45	11.01	10.69	11.52	12.35	11.47	10.63	7.63	6.86	6.67	7.93	9.45	9.17	8.99	Diurnal Average		
Dir	W	W	W	W	WNW	W	W	W	W	W	WNW	WNW	WNW	WNW	NW	NW	NW	NW	NW	NW	NW	WNW	WNW	WNW	W	Diurnal Maximum	
Spd	35.50	37.55	36.47	32.89	33.91	37.26	42.26	43.14	44.40	41.17	39.25	41.64	54.61	41.97	55.58	50.97	32.91	37.01	41.80	37.19	39.62	33.89	34.77	38.22	Diurnal Maximum		
Dir	314.09	325.01	319.74	320.50	316.16	315.29	316.39	315.29	315.03	295.58	328.51	317.03	322.33	329.43	315.34	315.38	322.40	295.39	297.32	327.88	300.20	327.65	316.00	315.10	Diurnal Maximum		
Maximum Speed Value: 55.6 kph on Oct 17 15:00																				Minimum Speed Value: 0.2 kph on Oct 12 23:00				Hours in Service: 744			
Maximum Daily Speed Average: 30.15 kph on Oct 2																				Minimum Daily Speed Average: 1.10 kph on Oct 13				Hours of Data: 744			
Maximum Diurnal Speed Average: 12.35 kph at hour 15																				Minimum Diurnal Speed Average: 6.67 kph at hour 20				Hours of Missing Data: 0			
Monthly Average Velocity: 9.301 kph 289.18 deg																				Speed Percentiles: P <sub>1</sub> = 1.8 P <sub>10</sub> = 5.3 Q <sub>1</sub> = 8.5 Median = 12.5 Q <sub>3</sub> = 19.0 P <sub>90</sub> = 29.2 P <sub>99</sub> = 41.7				Percent Operational Time: 100.0			
All monthly, daily, and diurnal averages have been calculated using vector methods																											
Frequency Distribution																											
		Speed Range (kph)																									
Direction	0 to 5	5 to 11	11 to 19	19 to 28	28 to 38	> 38	Total																				
North	9	23	9	6	3	0	50																				
NorthEast	4	14	6	0	0	0	24																				
East	6	20	3	0	0	0	29																				
SouthEast	7	25	11	5	0	0	48																				
South	11	23	20	1	0	0	55																				
SouthWest	16	79	93	2	0	0	190																				
West	8	24	71	29	1	0	133																				
NorthWest	3	17	55	59	61	20	215																				
Total	64	225	268	102	65	20	744																				





**WCAS - Genesee**  
**Summary of Hourly Averages**

**Relative Humidity (RH) - %**  
**October 2017**

Maximum Value: 99.12 % on Oct 2 06:00      Maximum Daily Average: 90.75 % on Oct 11 Minimum Value: 24.0 % on Oct 23 15:00      Minimum Daily Average: 48.59 % on Oct 28 Maximum Diurnal Average: 81.71 % at hour 8      Minimum Diurnal Average: 52.23 % at hour 15 Monthly Average: 69.422 %      Percentiles: P <sub>1</sub> = 33.3 P <sub>10</sub> = 44.3 Q <sub>1</sub> = 55.8 Median = 71.6 Q <sub>3</sub> = 83.7 P <sub>90</sub> = 92.3 P <sub>99</sub> = 97.2																								Hours in Service:	744																								
																								Hours of Data:	744																								
																								Hours of Missing Data:	0																								
																								Hours of Calibration:	0																								
																								Percent Operational Time:	100.0																								
Day	Hourly Period Ending At																								Daily Average	Daily Maximum																							
	1	2	3	4	5	6	7	8	9	10	11	12	13	14	15	16	17	18	19	20	21	22	23	24																									
1-Oct	51.9	55.5	58.4	62.1	64.6	67.7	71.6	73.7	73.6	69.9	64.9	62.6	61.8	61.1	61.8	61.9	66.1	66.4	71.9	72.8	79.0	91.7	95.3	95.8	69.26	95.76																							
2-Oct	95.1	95.4	96.0	96.7	98.5	99.1	98.9	97.2	93.2	90.3	88.1	85.6	82.4	80.2	73.5	64.5	61.2	58.8	60.3	69.1	75.7	77.2	78.3	82.4	83.24	99.12																							
3-Oct	82.2	81.6	82.4	79.5	79.1	86.4	93.0	93.6	82.6	72.4	60.2	49.2	47.5	41.8	38.2	36.7	45.7	61.3	68.4	71.6	73.6	69.6	68.6	73.5	68.27	93.57																							
4-Oct	77.6	62.8	61.8	59.5	60.9	67.2	80.7	80.5	69.6	58.1	51.8	42.1	37.6	36.3	35.6	34.5	34.0	38.4	48.4	53.7	60.1	71.7	74.1	79.6	57.35	80.72																							
5-Oct	79.3	78.6	78.6	76.3	77.9	83.9	82.0	89.8	78.6	58.8	48.1	41.8	38.6	37.3	37.2	38.6	43.0	50.3	61.6	67.3	72.2	76.6	76.1	75.0	64.47	89.85																							
6-Oct	72.6	76.0	71.3	69.0	84.6	90.0	90.2	90.9	86.1	81.1	78.4	68.8	55.9	51.3	49.6	42.7	43.1	49.7	61.1	65.7	61.0	56.8	78.4	78.4	68.87	90.89																							
7-Oct	66.1	58.6	56.6	54.9	66.3	74.9	66.0	58.2	54.9	61.7	80.9	88.4	86.0	59.8	50.4	48.3	48.3	49.1	49.8	54.8	61.2	63.0	68.0	85.1	62.96	88.38																							
8-Oct	83.0	80.6	78.7	75.6	76.6	70.1	82.1	79.1	71.4	66.7	60.9	55.7	48.1	44.6	44.3	45.4	50.6	56.2	63.5	75.7	79.7	83.0	87.1	84.7	68.48	87.11																							
9-Oct	83.8	80.7	81.1	81.7	77.7	71.5	66.3	61.1	56.6	54.5	50.0	41.4	34.2	30.4	28.6	34.0	43.5	52.8	62.5	72.1	80.3	80.2	82.4	85.1	62.18	85.08																							
10-Oct	86.3	83.2	87.7	90.7	91.9	84.9	86.7	87.1	88.4	81.7	73.3	69.1	62.9	59.6	60.9	63.4	69.6	72.2	72.2	75.4	83.9	88.3	91.9	94.8	79.42	94.83																							
11-Oct	94.2	94.1	97.1	97.2	95.7	95.5	96.7	97.0	92.5	88.3	85.7	84.1	78.9	75.8	79.6	80.0	84.8	88.0	95.5	95.7	97.3	95.8	94.5	94.0	90.75	97.27																							
12-Oct	94.1	92.0	93.3	92.4	91.5	92.8	91.7	92.2	92.8	89.7	84.1	81.2	78.8	76.9	75.2	71.1	74.7	80.3	84.9	84.2	79.0	80.9	86.4	86.8	85.29	94.11																							
13-Oct	87.0	91.0	94.9	94.2	92.0	93.4	90.1	90.8	93.7	87.6	75.8	71.5	71.6	71.2	68.9	70.3	73.7	84.1	92.9	94.4	97.2	96.7	95.6	95.2	86.41	97.23																							
14-Oct	94.6	93.4	94.1	96.2	96.2	96.9	95.2	94.0	91.5	88.9	83.9	73.7	62.0	56.2	55.8	56.9	70.0	77.0	85.3	88.9	76.3	61.8	61.1	60.7	79.61	96.86																							
15-Oct	63.3	66.1	70.0	80.5	82.6	87.1	91.4	87.4	78.9	59.1	46.7	43.1	36.9	33.6	31.9	33.3	40.2	45.3	47.7	48.4	58.2	63.2	67.8	65.5	59.50	91.44																							
16-Oct	72.2	72.7	68.2	66.6	62.7	62.4	63.3	66.3	64.1	59.9	54.9	51.6	47.8	48.2	49.8	49.8	50.3	54.3	61.0	71.3	74.7	79.9	81.1	90.9	63.50	90.86																							
17-Oct	84.7	90.4	83.0	80.8	80.7	81.9	80.8	81.5	79.0	69.6	50.9	43.6	40.4	42.0	73.0	87.0	79.7	77.8	73.4	70.3	68.9	71.0	75.5	66.9	72.20	90.35																							
18-Oct	59.8	58.0	63.4	65.9	77.9	79.6	77.9	86.6	77.9	68.1	61.8	47.5	41.6	40.8	40.2	44.0	44.8	44.7	50.5	55.2	64.2	70.2	74.0	78.2	61.37	86.64																							
19-Oct	77.2	71.6	62.5	68.2	71.0	68.7	79.4	89.3	87.0	76.0	66.2	55.2	46.7	43.9	44.3	44.9	48.4	51.3	54.8	64.5	72.2	76.7	86.6	83.7	66.26	89.26																							
20-Oct	70.7	83.7	85.4	81.4	87.8	84.6	79.0	80.9	77.9	73.2	67.5	59.2	54.9	52.8	54.8	54.4	56.9	59.5	62.2	71.8	70.1	73.5	83.8	84.4	71.28	87.81																							
21-Oct	93.3	91.9	91.2	93.5	95.1	93.5	94.1	93.9	87.6	81.5	70.1	60.9	54.9	50.6	47.5	47.4	50.5	55.9	59.0	68.2	74.1	77.8	77.4	75.2	74.39	95.10																							
22-Oct	76.3	70.2	75.5	78.2	83.0	83.1	82.8	87.2	80.4	71.3	64.8	61.8	59.5	55.1	48.2	45.7	38.9	46.7	55.9	52.5	50.7	49.3	49.7	50.3	63.20	87.25																							
23-Oct	60.3	62.9	63.9	57.3	51.2	57.2	60.0	61.8	59.0	52.6	43.0	38.8	35.6	28.5	24.0	25.4	29.5	38.0	45.2	47.1	49.6	56.1	58.2	62.7	48.66	63.88																							
24-Oct	62.1	51.4	50.5	50.5	56.3	57.5	55.1	57.8	53.6	43.8	37.4	38.9	41.4	44.1	48.2	49.1	54.5	62.8	69.6	71.9	73.9	77.5	83.4	83.4	57.28	83.41																							
25-Oct	79.7	77.9	83.0	86.1	88.4	86.6	85.0	84.3	88.3	93.0	90.3	81.3	79.5	83.2	80.4	80.5	78.9	75.8	75.0	86.6	91.2	92.1	92.3	88.5	84.50	92.96																							
26-Oct	86.8	90.0	90.1	90.5	94.0	94.6	93.6	95.0	89.5	82.4	76.4	68.0	61.4	56.7	56.8	53.0	57.8	66.5	73.9	77.9	79.2	77.8	77.7	80.3	77.91	95.02																							
27-Oct	78.1	74.4	75.2	78.3	78.1	76.6	83.5	85.5	77.8	65.4	56.0	44.0	37.9	40.6	44.0	43.1	50.8	59.5	68.3	74.0	74.9	77.1	82.7	79.4	66.88	85.51																							
28-Oct	73.2	68.5	44.8	46.7	43.2	40.2	42.2	42.0	38.9	38.2	39.6	40.3	40.2	41.9	42.7	52.0	64.0	53.8	52.1	51.0	53.9	54.1	51.8	50.6	48.59	73.25																							
29-Oct	50.7	55.8	63.9	65.6	65.7	63.0	60.0	61.7	62.2	59.2	56.5	52.4	47.6	47.2	49.4	54.3	55.3	56.0	58.6	62.3	68.8	71.7	74.7	82.2	60.20	82.22																							
30-Oct	88.4	90.2	91.6	89.3	91.1	91.8	91.8	90.2	88.0	83.2	76.1	64.6	50.2	37.7	37.9	35.5	34.3	38.6	41.0	45.2	48.1	49.1	49.8	50.1	64.74	91.82																							
31-Oct	55.3	62.5	59.7	56.1	62.5	92.3	95.7	96.6	97.2	97.3	96.6	96.4	92.0	89.9	86.3	85.4	84.2	79.8	83.6	96.2	92.0	90.8	95.9	96.5	85.04	97.34																							
																								76.77	76.19	75.93	76.17	78.22	79.83	80.88	81.71	77.84	71.73	65.83	60.09	55.31	52.24	52.23	52.68	55.72	59.70	64.84	69.55	72.30	74.24	77.43	78.71	Diurnal Average	
																								95.06	95.39	97.11	97.22	98.54	99.12	98.88	97.18	97.16	97.34	96.55	96.36	92.01	89.93	86.31	86.99	84.77	88.03	95.47	96.18	97.27	96.73	95.91	96.54	Diurnal Maximum	



**WCAS - Genesee**  
**Summary of Hourly Averages**

**Global Solar Radiation (GSR) - W/m2**  
**October 2017**

<b>Maximum Value: 590.38 W/m2 on Oct 3 13:00</b>																								<b>Hours in Service: 744</b>		
<b>Maximum Daily Average: 165.07 W/m2 on Oct 3</b>																								<b>Hours of Data: 744</b>		
<b>Minimum Value: 0.0 W/m2 on Oct 1 01:00</b>																								<b>Hours of Missing Data: 0</b>		
<b>Maximum Diurnal Average: 341.79 W/m2 at hour 13</b>																								<b>Hours of Calibration: 0</b>		
<b>Monthly Average: 80.472 W/m2</b>																								<b>Percent Operational Time: 100.0</b>		
<b>Minimum Daily Average: 17.33 W/m2 on Oct 31</b>																										
<b>Minimum Diurnal Average: 0.00 W/m2 at hour 1</b>																										
<b>Percentiles: P<sub>1</sub> = 0.0 P<sub>10</sub> = 0.0 Q<sub>1</sub> = 0.0 Median = 0.0 Q<sub>3</sub> = 119.2 P<sub>90</sub> = 297.1 P<sub>99</sub> = 520.1</b>																										
Day	Hourly Period Ending At																								Daily Average	Daily Maximum
	1	2	3	4	5	6	7	8	9	10	11	12	13	14	15	16	17	18	19	20	21	22	23	24		
1-Oct	0.0	0.0	0.0	0.0	0.0	0.0	0.9	24.6	50.9	120.3	183.4	216.0	191.1	167.8	159.8	144.6	41.3	15.2	0.0	0.0	0.0	0.0	0.0	0.0	54.83	216.00
2-Oct	0.0	0.0	0.0	0.0	0.0	0.0	0.0	15.2	45.9	116.9	224.4	367.9	445.9	398.0	387.6	350.4	167.6	54.2	2.2	0.0	0.0	0.0	0.0	0.0	107.34	445.91
3-Oct	0.0	0.0	0.0	0.0	0.0	0.0	2.1	124.4	281.3	398.4	497.2	574.6	590.4	558.7	467.3	300.5	122.3	42.3	2.1	0.0	0.0	0.0	0.0	0.0	165.07	590.38
4-Oct	0.0	0.0	0.0	0.0	0.0	0.0	2.4	61.1	242.1	375.1	446.5	532.7	563.9	531.3	430.8	323.0	180.6	45.5	0.1	0.0	0.0	0.0	0.0	0.0	155.63	563.92
5-Oct	0.0	0.0	0.0	0.0	0.0	0.0	0.7	76.2	224.8	362.2	467.0	531.8	553.4	516.9	431.6	316.6	174.2	46.3	0.4	0.0	0.0	0.0	0.0	0.0	154.25	553.42
6-Oct	0.0	0.0	0.0	0.0	0.0	0.0	2.0	26.6	51.0	67.6	86.3	159.5	129.2	198.6	140.2	145.3	92.5	29.9	0.0	0.0	0.0	0.0	0.0	0.0	47.03	198.63
7-Oct	0.0	0.0	0.0	0.0	0.0	0.0	0.7	51.4	128.7	107.9	112.6	82.4	181.0	291.7	255.2	233.6	138.5	34.0	0.0	0.0	0.0	0.0	0.0	0.0	67.40	291.69
8-Oct	0.0	0.0	0.0	0.0	0.0	0.0	0.2	54.3	64.6	75.9	124.7	365.2	556.9	467.8	401.3	286.4	157.0	33.7	0.0	0.0	0.0	0.0	0.0	0.0	107.82	556.88
9-Oct	0.0	0.0	0.0	0.0	0.0	0.0	0.0	17.2	109.0	149.2	190.8	296.3	536.2	492.4	318.4	117.2	87.1	37.1	0.0	0.0	0.0	0.0	0.0	0.0	97.95	536.22
10-Oct	0.0	0.0	0.0	0.0	0.0	0.0	0.0	17.3	85.1	150.2	157.5	128.1	106.3	95.7	94.5	79.5	35.5	7.1	0.0	0.0	0.0	0.0	0.0	0.0	39.87	157.52
11-Oct	0.0	0.0	0.0	0.0	0.0	0.0	0.0	15.0	81.6	145.3	156.6	205.5	280.8	329.2	203.2	109.0	48.0	6.2	0.0	0.0	0.0	0.0	0.0	0.0	65.85	329.22
12-Oct	0.0	0.0	0.0	0.0	0.0	0.0	0.0	20.1	45.6	133.5	230.7	146.9	200.3	124.9	86.6	92.2	35.6	7.7	0.0	0.0	0.0	0.0	0.0	0.0	46.84	230.71
13-Oct	0.0	0.0	0.0	0.0	0.0	0.0	0.0	49.6	135.8	362.0	452.8	379.1	240.0	322.6	229.3	136.8	105.1	18.1	0.0	0.0	0.0	0.0	0.0	0.0	101.30	452.78
14-Oct	0.0	0.0	0.0	0.0	0.0	0.0	0.0	9.7	30.4	66.8	96.8	133.8	187.6	148.9	89.9	53.8	24.6	8.0	0.0	0.0	0.0	0.0	0.0	0.0	35.43	187.58
15-Oct	0.0	0.0	0.0	0.0	0.0	0.0	0.0	28.0	151.0	316.8	266.3	407.8	500.7	442.1	413.7	232.8	87.3	11.9	0.0	0.0	0.0	0.0	0.0	0.0	119.10	500.65
16-Oct	0.0	0.0	0.0	0.0	0.0	0.0	0.0	12.2	64.8	246.6	380.5	463.5	424.8	177.6	75.4	51.4	42.6	11.4	0.0	0.0	0.0	0.0	0.0	0.0	81.28	463.47
17-Oct	0.0	0.0	0.0	0.0	0.0	0.0	0.0	6.7	36.4	137.1	349.3	282.1	317.8	97.9	78.1	13.5	16.4	2.5	0.0	0.0	0.0	0.0	0.0	0.0	55.74	349.29
18-Oct	0.0	0.0	0.0	0.0	0.0	0.0	0.0	36.5	137.3	181.4	279.8	362.8	416.2	315.6	211.4	118.3	50.8	8.5	0.0	0.0	0.0	0.0	0.0	0.0	88.27	416.19
19-Oct	0.0	0.0	0.0	0.0	0.0	0.0	0.0	11.8	70.3	272.1	317.1	422.2	374.2	353.9	236.8	140.8	50.9	4.0	0.0	0.0	0.0	0.0	0.0	0.0	93.92	422.15
20-Oct	0.0	0.0	0.0	0.0	0.0	0.0	0.0	6.5	54.5	140.9	202.6	404.1	407.9	275.3	125.8	74.0	39.3	5.3	0.0	0.0	0.0	0.0	0.0	0.0	72.33	407.85
21-Oct	0.0	0.0	0.0	0.0	0.0	0.0	0.0	32.0	158.8	276.9	380.2	441.6	456.9	418.9	287.5	154.7	87.1	6.9	0.0	0.0	0.0	0.0	0.0	0.0	112.56	456.92
22-Oct	0.0	0.0	0.0	0.0	0.0	0.0	0.0	6.8	57.8	254.1	371.6	407.6	271.4	278.5	180.6	158.7	69.9	4.0	0.0	0.0	0.0	0.0	0.0	0.0	85.88	407.56
23-Oct	0.0	0.0	0.0	0.0	0.0	0.0	0.0	20.0	133.8	246.2	293.9	408.6	444.5	418.2	260.5	147.8	89.7	4.7	0.0	0.0	0.0	0.0	0.0	0.0	102.83	444.47
24-Oct	0.0	0.0	0.0	0.0	0.0	0.0	0.0	4.6	67.6	135.8	361.9	415.1	392.8	304.3	140.0	158.2	43.8	1.7	0.0	0.0	0.0	0.0	0.0	0.0	84.41	415.14
25-Oct	0.0	0.0	0.0	0.0	0.0	0.0	0.0	0.0	20.4	39.2	58.4	154.0	235.8	176.2	64.5	52.1	9.9	0.0	0.0	0.0	0.0	0.0	0.0	0.0	33.77	235.79
26-Oct	0.0	0.0	0.0	0.0	0.0	0.0	0.0	4.5	41.0	78.5	143.3	201.2	246.1	354.9	174.7	130.2	64.8	3.1	0.0	0.0	0.0	0.0	0.0	0.0	60.10	354.88
27-Oct	0.0	0.0	0.0	0.0	0.0	0.0	0.0	9.1	99.4	206.4	236.0	419.2	457.7	217.9	147.2	165.0	40.9	5.4	0.0	0.0	0.0	0.0	0.0	0.0	83.51	457.67
28-Oct	0.0	0.0	0.0	0.0	0.0	0.0	0.0	5.0	50.7	79.7	174.4	291.2	239.1	87.2	36.0	25.7	6.5	0.0	0.0	0.0	0.0	0.0	0.0	0.0	41.48	291.23
29-Oct	0.0	0.0	0.0	0.0	0.0	0.0	0.0	8.2	95.7	169.2	253.5	343.5	296.7	219.7	114.2	59.1	22.0	0.5	0.0	0.0	0.0	0.0	0.0	0.0	65.93	343.51
30-Oct	0.0	0.0	0.0	0.0	0.0	0.0	0.0	6.5	63.2	76.8	108.9	199.2	271.2	230.5	130.5	75.4	28.2	0.0	0.0	0.0	0.0	0.0	0.0	0.0	49.60	271.15
31-Oct	0.0	0.0	0.0	0.0	0.0	0.0	0.0	0.0	10.7	26.0	32.6	53.6	79.0	93.8	55.5	46.1	18.6	0.1	0.0	0.0	0.0	0.0	0.0	0.0	17.33	93.78
<b>Diurnal Average</b>																								<b>Diurnal Average</b>		
<b>Diurnal Maximum</b>																								<b>Diurnal Maximum</b>		



**WCAS - Genesee**  
**Summary of Hourly Standard Deviations**

**Wind Speed (WS) - kph**  
**October 2017**

Maximum Value: 17.78 kph on Oct 17 14:00		Maximum Daily Average: 5.84 kph on Oct 7		Hours in Service: 744																							
Minimum Value: 0.6 kph on Oct 27 20:00		Minimum Daily Average: 1.58 kph on Oct 13		Hours of Data: 744																							
Maximum Diurnal Average: 4.71 kph at hour 14		Minimum Diurnal Average: 2.59 kph at hour 20		Hours of Missing Data: 0																							
Monthly Average: 3.314 kph		Percentiles: P <sub>1</sub> = 0.8 P <sub>10</sub> = 1.3 Q <sub>1</sub> = 1.9 Median = 2.8 Q <sub>3</sub> = 4.3 P <sub>90</sub> = 6.2 P <sub>99</sub> = 8.8		Hours of Calibration: 0																							
				Percent Operational Time: 100.0																							
Day	Hourly Period Ending At (MST)																								Daily Average	Daily Maximum	
	1	2	3	4	5	6	7	8	9	10	11	12	13	14	15	16	17	18	19	20	21	22	23	24			
1-Oct	4.9	5.2	5.0	3.8	3.5	3.9	3.9	4.1	5.2	5.9	5.9	6.2	6.4	7.1	7.2	7.0	6.4	7.7	7.3	6.7	7.5	6.4	5.2	6.0	5.78	7.73	
2-Oct	6.4	6.4	6.0	6.0	5.7	6.1	6.7	6.9	6.8	6.9	7.1	6.6	7.0	7.3	6.4	6.2	5.9	4.3	4.0	2.4	2.0	1.5	1.9	1.4	5.33	7.28	
3-Oct	1.7	1.7	2.2	2.1	2.2	3.0	1.7	2.1	2.0	2.4	2.3	3.4	3.3	3.7	3.5	3.9	2.1	2.4	3.1	1.4	2.0	2.6	3.5	1.5	2.49	3.86	
4-Oct	5.3	3.4	2.4	2.3	3.8	5.2	1.9	1.8	1.7	2.0	2.0	2.7	2.4	3.3	2.8	2.7	2.3	1.3	0.8	1.5	0.7	1.9	1.4	1.2	2.37	5.34	
5-Oct	0.9	0.9	0.9	1.6	4.2	3.2	3.1	0.9	3.8	1.9	2.8	2.5	2.8	2.7	3.1	2.4	2.3	1.7	1.8	1.4	1.0	1.1	1.0	1.5	2.06	4.17	
6-Oct	2.2	3.0	4.5	4.1	3.1	2.8	2.2	3.2	3.1	2.4	2.2	1.9	2.3	3.8	4.0	5.8	5.4	2.6	4.0	2.1	2.0	13.4	10.9	3.4	3.93	13.36	
7-Oct	7.2	5.0	5.3	3.6	2.9	4.0	5.0	5.3	7.1	9.6	8.1	8.7	5.1	5.7	7.0	4.5	8.6	3.8	3.7	3.6	5.9	6.5	6.9	7.3	5.84	9.59	
8-Oct	4.5	5.4	5.9	5.6	6.0	5.6	5.1	5.2	5.6	5.7	6.2	5.7	6.2	5.1	5.3	4.7	5.0	4.6	2.6	3.1	2.9	1.9	1.5	1.1	4.61	6.19	
9-Oct	1.5	1.4	1.3	1.5	1.7	1.7	1.5	1.5	1.7	2.5	3.0	5.4	4.6	6.0	6.2	4.5	3.7	3.8	3.9	2.3	1.5	2.0	1.3	1.3	2.74	6.19	
10-Oct	1.7	1.7	2.4	2.4	1.9	2.7	2.1	1.7	1.1	2.4	2.7	2.9	3.0	2.5	2.8	2.6	3.9	2.6	3.8	3.1	4.1	2.6	1.9	1.7	2.51	4.07	
11-Oct	2.1	2.8	4.3	2.5	2.9	2.9	3.4	3.6	4.6	4.4	4.3	4.3	5.1	4.7	5.9	4.7	3.6	3.9	3.6	4.3	3.4	3.4	3.2	2.7	3.77	5.89	
12-Oct	2.3	2.5	2.3	2.2	1.9	1.8	2.5	1.5	1.2	1.4	2.4	2.4	2.3	2.0	1.9	1.8	1.4	2.2	0.8	0.8	2.0	2.3	1.8	1.4	1.88	2.47	
13-Oct	1.2	1.3	1.0	1.4	2.5	1.2	0.8	1.3	2.4	1.6	1.9	2.6	3.2	2.5	2.6	1.9	1.2	1.4	1.0	1.2	0.6	0.9	0.9	1.5	1.58	3.20	
14-Oct	0.9	0.9	1.6	1.6	1.1	1.8	2.0	2.1	2.2	2.1	1.9	2.2	2.6	2.8	1.6	6.4	7.5	3.0	1.7	1.3	3.8	2.8	3.3	3.6	2.53	7.54	
15-Oct	2.5	2.1	2.0	1.7	1.2	1.0	3.8	2.4	1.8	2.2	2.3	2.8	3.5	3.3	3.4	3.7	3.6	0.9	1.1	1.0	1.6	2.4	1.9	1.3	2.22	3.76	
16-Oct	2.2	2.4	2.0	2.4	3.8	2.4	2.2	5.1	3.2	3.8	3.5	3.0	4.7	3.3	3.1	2.8	2.5	2.5	2.4	2.6	2.6	2.9	2.8	1.6	2.91	5.13	
17-Oct	1.5	1.3	1.6	1.5	1.6	2.3	1.4	2.6	2.1	1.9	2.7	2.1	2.7	17.8	9.0	11.2	8.0	8.3	9.7	8.6	9.4	7.3	4.8	5.5	5.21	17.78	
18-Oct	4.9	5.0	2.6	3.0	1.9	2.8	5.4	2.9	3.3	1.6	1.4	3.2	3.5	3.9	4.3	4.7	4.3	3.6	4.1	1.8	1.6	1.9	1.6	2.7	3.17	5.43	
19-Oct	2.1	1.9	1.6	4.6	1.7	3.1	4.1	2.3	2.0	1.5	2.2	2.7	2.8	3.3	2.9	2.8	1.4	1.9	1.7	1.7	2.1	3.1	2.9	1.6	2.43	4.57	
20-Oct	1.7	2.3	3.6	4.4	3.9	3.3	3.1	5.2	3.4	3.5	3.7	4.3	4.2	3.8	3.4	4.5	4.4	4.0	3.1	2.4	2.9	3.1	2.1	4.1	3.52	5.21	
21-Oct	4.5	1.7	2.2	5.9	3.4	1.6	1.2	1.5	2.6	2.1	2.3	2.6	2.6	2.6	2.9	2.4	2.0	1.2	1.6	1.4	0.7	1.6	0.9	1.2	2.19	5.88	
22-Oct	0.8	1.8	2.3	3.3	1.4	2.4	2.8	1.6	1.6	3.7	3.9	3.5	3.9	3.2	3.2	3.0	6.3	2.2	1.8	2.4	2.9	2.5	2.1	2.1	2.70	6.32	
23-Oct	2.8	1.8	1.4	1.8	3.0	2.6	2.3	2.0	2.5	3.8	3.5	3.5	4.9	5.6	4.4	4.2	1.7	1.2	1.2	1.5	2.1	1.4	2.4	2.4	2.61	5.62	
24-Oct	1.3	3.1	2.4	2.6	2.0	2.0	2.0	2.3	2.7	2.7	5.1	5.5	6.1	5.7	5.7	6.2	3.6	1.7	1.5	2.6	2.1	2.1	2.7	2.4	3.16	6.17	
25-Oct	2.9	3.0	2.5	2.0	2.9	3.0	1.9	2.7	6.3	4.5	5.4	16.4	10.6	8.0	7.1	6.2	6.1	5.7	4.9	3.9	2.9	1.7	1.5	1.2	4.72	16.43	
26-Oct	2.1	1.1	1.2	1.9	0.9	1.7	2.2	2.5	2.8	3.1	2.8	2.9	2.8	3.0	3.9	2.8	2.1	1.5	1.4	0.9	1.1	1.0	1.7	4.0	2.14	3.95	
27-Oct	1.1	1.7	4.3	3.6	1.8	1.6	2.3	2.0	3.1	2.4	2.5	2.9	3.1	2.9	4.4	1.9	1.3	1.1	1.1	0.6	1.4	2.1	1.6	0.8	2.15	4.37	
28-Oct	2.0	3.9	4.0	2.9	3.9	3.4	2.8	2.8	3.7	3.7	2.5	7.3	7.8	6.2	5.6	6.4	5.3	6.4	5.8	3.5	5.2	5.9	6.6	7.8	4.81	7.84	
29-Oct	7.2	7.1	7.6	5.1	5.8	5.7	6.4	5.7	5.5	7.0	7.3	8.0	7.6	6.6	6.8	5.5	4.2	3.7	3.6	2.6	2.3	1.7	1.9	3.1	5.33	8.01	
30-Oct	1.3	1.0	1.1	1.2	1.2	1.2	1.5	1.1	2.2	2.2	1.8	2.5	2.7	3.3	3.6	6.6	5.3	5.5	2.8	2.3	2.8	1.2	2.1	1.4	2.42	6.62	
31-Oct	1.7	1.4	1.3	2.2	1.3	1.5	1.3	1.2	1.4	2.9	4.1	3.3	5.0	4.6	5.1	5.8	5.2	6.6	4.1	5.2	5.0	6.8	5.2	4.2	3.60	6.79	
		2.75	2.72	2.86	2.92	2.75	2.83	2.86	2.81	3.18	3.35	3.54	4.33	4.34	4.71	4.48	4.50	4.09	3.34	3.03	2.59	2.82	3.19	2.85	2.69	Diurnal Average	
		7.18	7.10	7.57	6.02	5.98	6.07	6.69	6.87	7.07	9.59	8.07	16.43	10.59	17.78	8.98	11.17	8.56	8.31	9.68	8.65	9.37	13.36	10.91	7.83	Diurnal Maximum	



**WCAS - Genesee**  
**Summary of Hourly Standard Deviations**

**Wind Direction (WD) - deg**  
**October 2017**

Maximum Value: 90.94 deg on Oct 13 08:00		Maximum Daily Average: 28.71 deg on Oct 13		Hours in Service: 744																							
Minimum Value: 2.7 deg on Oct 5 22:00		Minimum Daily Average: 9.40 deg on Oct 11		Hours of Data: 744																							
Maximum Diurnal Average: 19.38 deg at hour 7		Minimum Diurnal Average: 12.60 deg at hour 24		Hours of Missing Data: 0																							
Monthly Average: 15.737 deg		Percentiles: P <sub>1</sub> = 4.0 P <sub>10</sub> = 7.0 Q <sub>1</sub> = 9.0 Median = 12.0 Q <sub>3</sub> = 17.4 P <sub>90</sub> = 28.9 P <sub>99</sub> = 70.6		Hours of Calibration: 0																							
				Percent Operational Time: 100.0																							
Day	Hourly Period Ending At																								Daily Average	Daily Maximum	
	1	2	3	4	5	6	7	8	9	10	11	12	13	14	15	16	17	18	19	20	21	22	23	24			
1-Oct	13.9	13.6	14.8	16.0	16.2	15.4	15.4	18.6	15.1	10.8	11.8	12.3	14.1	12.5	11.5	11.9	11.7	11.9	11.6	12.1	11.6	10.9	10.8	12.2	13.20	18.56	
2-Oct	11.0	10.5	9.3	8.3	7.1	7.1	6.9	7.0	7.1	7.5	7.8	7.8	9.0	10.0	10.7	11.0	10.5	10.0	9.4	7.7	8.3	12.5	16.9	24.3	9.90	24.35	
3-Oct	22.4	24.2	24.0	25.1	25.3	27.6	10.4	9.3	11.8	12.0	14.5	15.4	15.4	15.5	10.5	11.5	8.8	5.1	15.3	14.4	6.7	9.6	12.2	3.8	14.61	27.58	
4-Oct	20.3	14.8	12.9	8.8	14.1	37.1	32.5	27.0	16.1	20.0	20.9	20.1	32.6	38.8	39.4	68.7	56.6	49.9	15.9	11.0	21.7	16.9	4.4	10.4	25.46	68.72	
5-Oct	4.6	4.9	5.1	5.2	35.9	10.2	13.7	16.6	17.9	16.3	12.4	15.5	21.5	19.5	14.8	18.1	8.6	7.3	14.1	9.4	7.6	2.7	6.8	4.0	12.20	35.88	
6-Oct	7.2	11.3	20.6	13.1	32.3	12.1	19.9	11.4	17.2	13.9	8.8	14.6	18.0	32.6	15.9	10.8	22.3	28.7	24.4	8.4	11.0	13.4	20.6	10.0	16.60	32.59	
7-Oct	14.8	11.5	12.8	11.1	18.5	16.6	11.4	11.7	13.1	10.8	12.4	13.7	27.9	11.2	10.5	8.9	9.8	15.7	12.1	13.6	10.9	11.3	11.3	8.5	12.92	27.89	
8-Oct	11.6	11.1	12.7	8.7	9.2	10.0	13.6	11.6	11.9	12.9	14.0	13.8	13.5	12.2	10.8	10.7	9.4	8.5	16.6	16.6	9.0	7.3	8.2	4.5	11.18	16.59	
9-Oct	5.3	5.4	6.4	6.7	6.8	6.8	6.1	7.5	15.8	8.6	9.1	19.6	16.0	12.5	14.9	26.6	8.0	8.0	28.2	39.0	10.1	6.4	6.5	17.7	12.41	39.04	
10-Oct	10.1	22.8	49.4	14.7	45.3	44.9	52.3	7.7	27.2	19.9	11.1	12.8	11.7	11.2	15.6	12.1	32.2	29.3	31.6	31.0	26.7	12.2	5.8	7.7	22.72	52.35	
11-Oct	7.0	7.0	8.4	14.2	10.7	10.6	7.6	7.3	7.0	7.1	8.6	7.9	10.7	11.0	10.6	10.9	9.3	9.0	8.1	10.9	9.3	10.5	8.7	13.1	9.40	14.25	
12-Oct	7.8	7.8	7.1	7.2	7.0	19.0	15.1	37.0	33.6	33.5	41.5	24.9	27.5	24.6	36.9	29.0	16.6	13.6	6.6	11.3	17.6	76.1	77.8	33.7	25.53	77.85	
13-Oct	13.6	27.8	18.2	14.2	33.7	11.4	12.7	90.9	55.9	16.9	54.2	56.7	63.7	35.4	30.2	19.5	22.0	32.1	13.8	26.3	11.8	7.7	11.3	9.0	28.71	90.94	
14-Oct	7.3	18.8	17.3	65.0	13.3	9.5	8.1	7.3	7.6	7.9	8.5	9.0	8.5	8.6	28.0	16.0	14.8	38.6	8.1	12.0	16.9	9.1	10.0	11.3	15.05	65.01	
15-Oct	9.4	11.5	24.3	5.0	6.8	11.0	21.7	8.7	9.3	6.7	12.3	13.7	13.9	13.5	12.2	10.8	8.1	19.4	17.7	11.9	17.2	18.7	13.9	11.9	12.90	24.25	
16-Oct	7.6	8.6	8.0	8.3	44.2	5.9	65.0	51.1	7.2	12.9	25.4	85.3	22.6	14.2	10.6	12.6	16.7	19.2	18.0	32.2	80.3	15.6	22.8	16.4	25.44	85.29	
17-Oct	50.2	12.8	16.3	10.9	27.3	11.9	22.8	43.7	19.8	14.1	12.9	10.8	16.7	44.8	8.5	15.8	19.4	16.2	15.2	15.0	13.7	17.4	12.0	13.9	19.26	50.17	
18-Oct	13.8	13.1	12.1	16.4	7.1	8.4	20.2	7.4	16.7	10.4	29.7	13.9	13.4	13.7	11.1	10.1	9.6	10.2	11.4	11.2	9.8	9.0	11.0	5.9	12.32	29.74	
19-Oct	38.9	24.7	18.6	57.6	11.5	33.6	82.4	23.5	16.5	13.4	17.4	13.1	19.3	21.7	13.2	27.4	17.1	19.3	13.2	35.8	26.6	73.3	22.9	7.5	27.02	82.43	
20-Oct	19.2	31.8	20.6	21.0	58.6	19.7	14.3	41.7	10.1	7.1	9.7	9.1	9.1	11.3	8.9	10.2	9.0	12.0	10.4	10.6	10.2	9.7	8.7	20.4	16.38	58.61	
21-Oct	18.1	5.5	5.2	29.1	15.4	5.3	4.9	7.9	24.8	18.5	13.3	31.0	43.4	30.9	30.1	15.3	28.7	9.9	10.1	11.0	13.3	15.9	9.6	17.2	17.27	43.44	
22-Oct	17.7	13.2	8.8	35.6	14.6	42.4	56.4	16.3	10.1	21.4	13.0	10.2	12.1	18.5	10.4	13.8	13.4	11.1	6.2	7.9	9.4	9.4	8.3	7.2	16.14	56.38	
23-Oct	10.3	16.0	11.2	11.5	9.7	8.8	8.4	7.7	17.8	19.1	14.1	17.7	14.9	17.2	10.9	18.3	36.0	24.2	11.5	6.1	15.7	20.1	8.4	7.0	14.27	35.96	
24-Oct	7.2	6.1	6.6	6.7	5.9	9.0	7.4	6.1	11.9	7.3	16.1	10.5	9.1	8.1	8.3	9.6	8.8	9.1	11.9	36.6	10.0	10.7	17.0	9.1	10.37	36.61	
25-Oct	9.4	12.9	13.6	20.9	18.3	14.1	30.3	37.8	25.3	13.9	15.1	20.1	10.7	8.5	8.5	8.3	9.0	9.3	9.9	12.7	14.7	13.2	7.6	10.9	14.79	37.78	
26-Oct	71.0	27.7	24.7	11.6	9.1	6.0	7.3	16.0	7.4	6.8	7.1	8.9	14.2	12.1	24.2	22.7	13.7	7.0	4.7	4.0	5.3	4.8	6.3	12.8	13.98	71.03	
27-Oct	5.1	4.4	46.3	14.7	4.4	7.0	6.7	4.8	5.2	11.1	13.6	18.7	17.0	31.0	22.7	23.2	20.4	9.6	7.0	15.8	11.2	4.9	3.7	3.7	13.01	46.27	
28-Oct	10.7	18.4	10.4	9.7	9.0	7.8	6.4	6.1	12.1	12.0	13.5	13.9	9.0	9.7	9.4	29.0	15.5	19.9	17.2	9.0	10.1	10.3	10.3	12.0	12.14	28.99	
29-Oct	12.5	11.1	10.3	13.0	16.9	12.3	11.9	12.8	11.1	10.9	10.8	10.3	9.8	10.7	15.2	10.6	8.3	9.4	7.3	12.3	12.6	7.0	9.7	31.4	12.02	31.35	
30-Oct	4.9	5.9	7.7	5.4	4.6	4.1	3.7	4.1	7.3	6.5	13.3	9.1	9.2	15.1	14.8	17.5	7.9	15.0	10.6	6.5	8.0	6.2	12.9	25.3	9.40	25.34	
31-Oct	12.8	5.0	3.9	8.8	10.1	17.9	5.2	5.6	13.6	23.8	12.5	11.7	10.9	12.3	11.0	9.9	9.5	11.5	16.6	19.6	11.3	11.1	8.2	7.7	11.26	23.78	
		15.35	13.56	15.09	16.28	17.70	14.94	19.38	18.44	15.60	13.35	15.65	17.82	17.59	17.70	15.81	17.12	15.86	16.13	13.37	15.55	14.80	14.97	13.05	12.60	Diurnal Average	
		71.03	31.85	49.39	65.01	58.61	44.94	82.43	90.94	55.91	33.49	54.18	85.29	63.74	44.82	39.45	68.72	56.61	49.91	31.57	39.04	80.28	76.14	77.85	33.70	Diurnal Maximum	

**WEST CENTRAL AIRSHED SOCIETY**

**CONTINUOUS AMBIENT AIR QUALITY  
MONITORING PROGRAM  
MONTHLY REPORT**

**END OF REPORT  
OCTOBER 2017**